

Helping you build better, every day

Everything you need, all in one
place, from the brands you trust.

www.rsonline.africa



3-Phase Monitoring Relay with NFC

- A 3 phase monitoring relay with configuration via FREE Zelio NFC Android App
- Capable of monitoring phase asymmetry, phase failure detection, undervoltage, overvoltage, over & under frequency
- LED indication and 2 C/O outputs with adjustable on/off delay & voltages thresholds



179-0019 RMNF22TB30 (120-480Vac)

DA10 Data Stations for IIoT

- The DA10 allows you to easily unlock valuable data from legacy equipment and share with the plant floor, enterprise or cloud platforms with ease
- Offers native support for over 300 industrial drivers, out-of-box OPC UA server capability, and simple point-and-click configuration of MQTT connectors
- Features a USB port for configuration and 1x RS232, 1x RS232/RS485 and 1x 10/100 BASE-T(X) Ethernet port



200-6439 DA10

Industrial Cellular VPN Router

- A cost effective solution to add cellular connectivity for machine to machine (M2M) applications.
- Dual SIM support for 2G/3G/4G cellular networks with Ethernet & RS-232/485 data connections
- Robust industrial design with 9-36Vdc power, and surface or DIN rail mounting options



193-5612 R3000 Lite WiFi Router

BB-400 Industrial Edge Controller

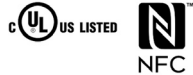
- An Industrial Edge Controller, powered by a Raspberry Pi combined with an Arduino creating the perfect platform for smarter machine communication
- Integrated 8 channel Digital IO, Serial Port, Bluetooth, WIFI, NFC, RTC and 2 independent ethernet ports
- Easily connect to processes, sensors, switches, machines and PLCs; data processed locally or sent to the cloud, with control via built in software or benefit from Linux and Raspbian open software
- 5-30Vdc powered with built in UPS power supply for safe shutdown of processor in event of power loss



181-7467 BB-400

Timer Relay with NFC Programming

- A DIN rail multi-function timer with 7 functions and 0.1s to 100h time ranges - all programmed via an intuitive, free Android™ app
- NFC programming allows fast, accurate timing fine-tuning and removes the 'tamper' factor once set
- 17.5mm wide timer has a 12-230Vac/dc supply and 1 x DPDT (8A) relay output



188-3539 LMMT2-NFC

Unmanaged Ethernet Switches

- Great value Ethernet switches with TP RJ45 ports and data transmission speeds of 10/100 Mbps
- 5-30Vdc supply voltage with autocrossing function and LEDs: Us, link and activity per port
- IP-20 polyamide case with removable screw terminal power block



144-8673 5 RJ45 Ports - DIN rail mount

226-3243 7 RJ45 Ports - Surface mount

712-4049 8 RJ45 Ports - DIN rail mount

Q2V Inverter Drives

- A compact AC inverter drive that combines easy operation with high-efficiency control and ease of integration
- Built-in EMC filter and the STO (Safe Torque Off) safety function and PID as standard
- Intelligent application wizard for quick set-up with ModBus / RS-485 comms as standard with options for CANopen, DeviceNet, Ethernet/IP, EtherCAT & PROFIBUS



194-3171	0.37kW - Single Phase in
194-3173	0.75kW - Single Phase in
194-3174	1.1kW - Single Phase in
194-3175	2.2kW - Single Phase in
194-3176	3kW - Single Phase in
194-3161	0.37kW - 3 phase in
194-3162	0.75kW - 3 phase in
194-3163	1.5kW - 3 phase in
194-3164	2.2kW - 3 phase in
194-3165	3.0kW - 3 phase in
194-3167	4.0kW - 3 phase in
194-3168	5.5kW - 3 phase in

E2Q6 Inductive Sensors

- A new type of rectangular inductive proximity sensor with longer sensing distance and with innovative free wire connection
- The shape of E2Q6 follows the format of standard limit switch, so it can be used in similar applications as alternative non-contact solution
- Change between any of five sensing directions: front or 90° up, down, left, or right



905-8799	20mm SR, NPN output, E2Q6N20E3H
905-8792	20mm SR, PNP output, E2Q6N20F3H
905-8796	30mm SR, NPN output, E2Q6N30ME3H

CP2E Compact PLCs

- A Micro PLC for compact equipment where Price/Performance ratio is a key, while supporting data collection and Machine-2-Machine communication
- 'E' entry level models offer optional serial or Ethernet comms, while 'N' level offer integrated Ethernet ports
- 'N' & 'S' level both have options for 2 or 4 axis positioning control with linear interpolation - ideal for pick/place and packaging machinery



196-3743	CP2E-E14DR-A 8 in, 6 out relay
196-3745	CP2E-E20DR-A 12 in, 8 out relay
196-3746	CP2E-E30DR-A 18 in, 12 out relay
196-3747	CP2E-E40DR-A 24 in, 16 out relay
196-3727	CP2E-N20DR-D 12 in, 8 out relay
196-3728	CP2E-N30DR-D 18 in, 12 out relay
196-3726	CP2E-N40DR-A 24 in, 16 out relay

E3-AS Distance-Settable Sensors

- The E3AS series uses innovative time-of-flight (TOF) technology which reduces false detection due to changes in the size, colour, or reflectivity of the target.
- Exceptionally long sensing range of 50 to 1,500mm - maximises flexibility
- Compact metal or plastic bodies with IP69K protection and ECOLAB detergent resistant certification



NEW

215-0542	35-500mm, metal Case, 2m cable, NPN
215-0538	35-500mm, metal case, M8 conn, NPN
215-0529	35-150mm, metal Case, 2m cable, NPN
215-0530	35-150mm, metal Case, M8 conn, NPN
193-8351	50-1500mm, plastic case, M8 conn, NPN
215-1510	50-1500mm, plastic case, 2m, PNP
193-8357	10-200mm, metal case, M8 conn, NPN
193-8358	10-200mm, metal case, M8 conn, PNP

E3S-DB Transparent Object Sensor

- Delivers reliable detection of all kinds of transparent objects such as PET bottles, glass bottles or transparent trays
- Choice of Smart Teach enabling fast set up or trimmer sensitivity adjustment
- Proven for use in environments found the Food & Beverage and Pharmaceutical industries



831-5971	0.7m, PNP, M12, smart Teach
831-5969	4.5m, PNP, M12, smart Teach
831-5975	0.7m, PNP, M12, trimmer Adj.
831-5978	4.5m, PNP, M12, trimmer Adj.

Siemens LOGO! V8.3 with Cloud

- The ever popular Logo! programmable controller now has cloud connectivity out of the box, as well as all the logic functionality you need
- Using Logo! Web Editor V2.0 enables direct connection to Amazon Web Services (AWS), with further platforms planned
- To see the full range visit RS Online and search 'Logo 8.3'

NEW



SIEMENS

209-7104	12/24Vdc
209-7103	24Vdc
209-7102	115/230Vac

FX5U Compact PLCs

- The first model in the iQ-F series is the FX5U, offering high performance in a compact, cost effective package
- Completely backward code-compatible with FX3 and previous FX-Series PLCs but now offering built-in Ethernet, analogue I/O, data logging via SD card, position control, security, and serial communications as standard
- Programming software GX Works3, supporting complete integration with the GOT series of Mitsubishi HMI



MELSEC iQ-F



875-5672	CPU 16I 16O Relay 100-240V - FX5U-32MR-ES
875-5676	CPU 32I 32O Relay 100-240V - FX5U-64MR-ES
875-5685	CPU 40I 40O Relay 100-240V - FX5U-80MR-ES
135-9270	CPU 24VDC 16 /16 I/O - FX5U-32MR/DS
135-9272	CPU 24VDC 32 /32 I/O - FX5U-64MR/DS
135-9275	CPU 24VDC 40 /40 I/O - FX5U-80MR/DS
877-2441	Software - GX Works3 V01-2L0C-E

Modicon M262 Motion & Logic Controller

- An IIoT ready motion & logic controller offering class leading connectivity and 3-5ns/Inst processing performance
- Each controller has 4x high speed inputs & digital outputs with motion control versions featuring an Incremental/SSI encoder input, all expandable with Modicon TM3 I/O modules
- 4 ethernet ports acting as a hub including: 2 x Gigabit and 1 x 100Mbps both with Ethernet/IP and Modbus TCP



201-1450	TM262L10MESE8T - 5ns/inst - Logic
201-1448	TM262L20MESE8T - 3ns/inst - Logic
201-1476	TM262M15MESS8T - 5 ns/inst - 4 axis Motion
201-1491	TM262M25MESS8T - 3 ns/inst - 8 axis Motion
201-1461	TM262M35MESS8T - 3 ns/inst - 16 axis Motion

Panel Mount RFID reader

- An innovative way to control user access or authority on machines or within automation applications
- Mounts in common 22mm cut out, IP65/67 rated, LED & audible feedback, and choice of tag holder or standard reader types
- Ethernet comms supporting Modbus TCP makes PLC or process integration straight forward

NEW



210-5540	RFID Reader, holder type
210-5538	RFID Reader, standard type
210-5546	RFID Tag, Black
210-5541	RFID Tag, Green
210-5542	RFID Tag, Yellow
210-5544	RFID Tag, Blue
210-5543	RFID Tag, Red

Micro810™ Logic Controller

- Micro810 controller is an economical logic controller programmable via FREE to use Connected Components Workbench™ (CCW)
- 8 Input (4 digital, 4 analog/digital, configurable) & 4 Output - Relay or SSR options, with optional local LCD
- DC models allow 4 inputs to function as 4 0 → 10V analog inputs



750-8602	24Vdc, 0-10V, 4 x Relay
750-8605	120/240Vac, 4x Relay
750-8609	24Vdc, 0-10V, 4x SSR
750-8661	Optional 1.5" local LCD

Universal HMIs from RS PRO

- 16k colour TFT HMIs based on high performance ARM Cortex™ A-series processors
- Each HMI offers support for all common PLC protocols and programming via USB
- 128mb Flash memory as standard, with IP65 sealed front fascia for maximum application flexibility

NEW



215-6604	7" 800x480 - RS232/422/485
221-3481	4.3" 480x272 - Ethernet, RS232/485/422
215-6605	7" 800x480 - Ethernet, RS232/422/485
215-6606	10.2" 1024x600 - Ethernet, RS232/422/485
215-6607	7" 800x480 - HTML support - Ethernet, RS232/422/485

ALTIVAR ATV320 Machine Drive

- The Altivar 'Machine' ATV320 variable speed drive replaces the popular ATV32 and ATV312 drives, featuring embedded Modbus & CANopen comms with the option of Ethernet to allow greater levels of integration
- The series also offers STO (Safe Torque Off), SS1 (Safe Stop 1), SLS (Safely Limited Speed), SMS (Safe Maximum Speed), and GDL (Guard Door Locking) features for enhanced machinery safety
- Single Phase versions listed - for full range visit uk.rs-online.com and search 'ATV320' for details



125-3233	0.18KW 200-240Vac
125-3235	0.37KW 200-240Vac
125-3239	0.55KW 200-240Vac
125-3243	0.75KW 200-240Vac
125-3247	1.1KW 200-240Vac
125-3251	1.5KW 200-240Vac
125-3255	2.2KW 200-240Vac

ALTIVAR ATV12 Inverter Drive

- Designed to be plug and play out of the box with the factory configuration suitable for the majority of small machine applications from 0.18-4.0kW
- Interchangeable with the previous generation ATV11 drive
- Offers thermal detection via build-in PTC probe and Modbus communication



669-5777	1 ph input 0.18KW
669-5770	1 ph input 0.37KW
669-5774	1 ph input 0.55KW
669-5783	1 ph input 0.75KW
669-5786	1 ph input 1.5KW
669-5796	3 ph input 0.75KW
669-5806	3 ph input 1.5KW
669-5809	3 ph input 2.2KW
669-5803	3 ph input 3KW
669-5812	3 ph input 4KW

TeSys D Green Contactors

- The NEW TeSys D range with AC/DC coils - every coil can be energised with either AC or DC
- Provides lower energy consumption in same dimensions as the original TeSys D range with reduced stock holding
- Low control current allows direct PLC control for contactors up to 80A



135-3940	9A 3P 24-60VAC/DC - LC1D09BNE
135-3942	9A 3P 100-250VAC/DC - LC1D09KUE
135-3943	12A 3P 24-60VAC/DC - LC1D12BNE
135-3945	12A 3P 100-250VAC/DC - LC1D12KUE
135-3946	18A 3P 24-60VAC/DC - LC1D18BNE
135-3948	18A 3P 100-250VAC/DC - LC1D18KUE
135-3949	25A 3P 24-60VAC/DC - LC1D25BNE
135-3951	25A 3P 100-250VAC/DC - LC1D25KUE
135-3952	32A 3P 24-60VAC/DC - LC1D32BNE
135-3954	32A 3P 100-250VAC/DC - LC1D32KUE

TeSys™ island Digital Load Management

NEW

- TeSys island is an innovative digital load management solution—providing data for higher machine efficiency and ease of servicing, with faster time to market
- As a modular, multifunctional system it provides integrated control, monitoring and diagnostics of low-voltage motor loads
- To use our online configurator to discover your ideal TeSys island setup scan the QR code



204-8279	TPRBCEIP Ethernet/IP, Modbus TCP Bus coupler, 24 V dc
204-8285	TPRVM001 Voltage Monitoring module, 3 phase
204-8274	TPRPM009 Power Interface Module 4kW
204-8275	TPRPM038 Power Interface Module 18.5kW
204-8281	TPRPM080 Power Interface Module 37kW
204-8287	TPRST009 3-pole starter 4kW
204-8289	TPRST025 3-pole starter 11kW
204-8282	TPRST038 3-pole starter 18.5kW
204-8291	TPRST065 3-pole starter 30kW
204-8277	TPRST080 3-pole starter 37kW
394-9986	LAD9R1 Reversing Contactor kit

GV2 Thermal-Magnetic Motor Circuit Breakers

- Complete protection in a single unit with overload protection via thermal-magnetic devices built into the circuit-breaker
- Offers Manual, local control when breaker is used on its own and automatic and remote control when combined with a contactor
- Optional undervoltage trip and shunt trips available from stock



395-0318	GV2ME03 0.25-0.4A FLC
395-0295	GV2ME05 0.63-1A FLC
395-0289	GV2ME06 1-1.6A FLC
395-0267	GV2ME07 2.5A FLC
395-0251	GV2ME08 2.5-4A FLC
395-0245	GV2ME10 4-6.3A FLC
395-0239	GV2ME14 6-10A FLC
395-0223	GV2ME16 9-14A FLC
395-0217	GV2ME20 13-18A FLC
400-1439	GV2ME21 17-23A FLC
395-0201	GV2ME22 20-25A FLC
395-0194	GV2ME32 24-32A FLC

E2E-NEXT Inductive sensors with IO-Link

- Based on the existing E2E series nickel-plated brass IP67 threaded inductive sensors but with IO-Link capability
- Feature a PNP NO/NC switched output, with the added benefit of IO-Link status data being accessible via a gateway over the same wiring
- Full range of over 100 E2E-NEXT variants available from stock



OMRON

124-4439	M12, Sr 3mm, NO/NC, M12 - E2E-X3B4-MITJ-IL3 0.3M
124-4440	M18, Sr 7mm, NO/NC, M12, E2E-X7B4-MITJ-IL3 0.3M
124-4441	M30, Sr 10mm, NO/NC, M12, E2E-X10B4-MITJ-IL3 0.3M

M18 Photoelectric Sensors

- Nickel plated brass body with IP67 sealing
- 10-30Vdc supply with LED output indication
- Retro-reflective sensors supplied with reflector



729-5090	NPN Diffuse M12 conn.
729-5104	PNP Diffuse M12 conn.
729-5094	NPN Diffuse 2m cable
729-5107	PNP Diffuse 2m cable
729-5110	NPN Retro 2m cable
729-5113	PNP Retro M12 conn.

Metal Cased EN50047 Limit Switches

- GLC series die cast metal cased limit switches with IP66 protection
- 1NO + 1NC (SPDT) snap action actions rated at 10A resistive (3A AC-15)
- PG 13.5 gland entry

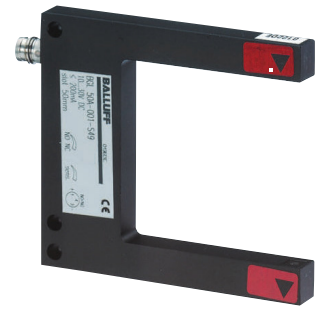


Honeywell

308-1793	Pin Plunger - GLCB01B
308-1816	Roller Plunger - GLCB01C
308-1822	Fixed Side Roller Lever - GLCB01A1A
308-1664	Adjustable Side Roller Lever - GLCB01A2A
308-1850	Fixed Top Roller Lever - GLCB01D
308-1670	Large Side Rotary Lever - GLCB01A9A
308-1838	Coil Spring Actuator - GLCB01E7B
308-1844	Adjustable Side Rotary Rod Lever - GLCB01A4J

Thru-Beam Fork Sensors

- High precision photoelectric sensors ideal for smaller object detection
- Adjustable sensitivity control
- Reversible switching (PNP NO / NC)
- 10 → 30 VDC supply voltage



BALLUFF

418-5234	PNP 10mm
418-4922	PNP 120mm
418-5256	PNP 20mm
418-5262	PNP 30mm
418-5278	PNP 50mm
418-5228	PNP 5mm
418-5284	PNP 80mm

Capacitive Proximity Sensors

- PBT bodied block sensors capable of detecting a variety of materials reliably
- Both offer adjustable sensitivity, LED indication and IP67 protection for industrial tasks
- Complete range of capacitive sensors available online - just visit RS online and search 'RS PRO capacitive'



184-5572	43 × 24mm Block, NPN, NO, cable
184-5574	43 × 24mm Block, PNP, NO, cable

Diffuse Photoelectric Sensors

- Direct detect diffused detection with adjustable sensitivity
- 10-30Vdc supply with reverse polarity protected output
- Red sender LED for alignment



SICK

288-9805	2 → 100 mm Detection Range PNP
288-9760	10 → 250 mm Detection Range PNP
288-9782	2 → 100 mm Detection Range PNP

easyE4 Logic Modules

- The easyE4 base devices and expansion modules are available as DC, AC and UC versions
- Up to 11 local I/O expansion modules can be added per base device
- Various communication options via the Ethernet interface are enabled: easyNET, Modbus TCP (client or server) and SmartWire-DT master
- Four programming languages are available within easySoft: EDP, LD, FBD, ST
- The integrated web server enables remote control and visualisation



181-9079	DC
188-3483	AC
181-9081	UC

easyE4 Series Touch Screen HMI

- 3.5" and 5.7" full colour displays enable a convenient visualisation of easyE4 projects
- Resistive touch allows the operation of the touch display with gloves
- The XV-102 HMI's support the Modbus TCP protocol with its Ethernet interfaces



847-8921	3.5"
847-8925	5.7"

RMQ Titan Emergency Stop Push Buttons

- The Small E-stop is a control element that stands out for its compact size and novel illumination system
- Optional RGB LEDs are available – the 360° illuminated ring can light up in any colour
- The small E-stop is compatible with flat rear contacts/optional self-monitoring contacts



202-0425	22mm non-illuminated turn to unlock
202-0424	22mm non-illuminated pull to unlock
202-0427	22mm illuminated turn to unlock
202-0426	22mm illuminated pull to unlock
202-0429	30mm non-illuminated turn to unlock
202-0428	30mm non-illuminated pull to unlock
202-0431	30mm illuminated turn to unlock
202-0430	30mm illuminated pull to unlock

Multi Colour Indicators

- The multicolour LED elements of the RMQ family are able to display a large variety of colours
- Indicator enhances safety, but also enables consistent display of the machine status
- Available as an M22 version with SmartWire-DT, or as an RMQ compact solution version
- For full range visit our website



399-3652	12-30Vac/dc green
399-3646	12-30Vac/dc red
399-3674	12-30Vac/dc blue

Contactors & Motor Protective Circuit Breakers

- Push-in technology on these ranges is a tool-free way of connection making wiring faster, safer and more efficient
- The Push-in range includes PKZ and DIL devices that combine screw and push-in terminals for use with a 3-phase busbar link
- The PKZ and DIL solution with push-in technology offers maximum reliability, and integrates seamlessly into existing control panel design



493-0078	DILM3 9A 24Vdc 3NO 4kW
493-0040	DILM3 9A 230Vac 3NO 4kW
493-0163	DILM3 12A 24Vdc 3NO 5.5kW
493-0236	DILM3 17A 24Vdc 3NO 7.5kW
493-0315	DILM3 32A 230Vac 3NO 15kW
513-0112	DILM3 65A 230Vac 3NO 30kW

P Switch Disconnectors

- The P switch disconnectors are available as P1 up to 32 A, P3 up to 100A and P5 up to 315A
- These compact and robust manually operated switches provide safe disconnection with positive mechanical contact breaking and making & breaking capabilities at AC-23A
- Available with or without the Emergency-Stop function, and are a solution for machine isolation, maintenance and safety switches

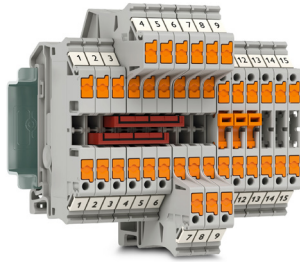


257-9384	2P 20A
257-9441	2P 32A
219-1401	3P 20A
818-435	3P 32A
103-8444	3P+N 32A

COMPLETE line

PTV Lateral Connection Terminal Blocks

- Designed to allow lateral or side connection of conductors
- Clearer wiring without bending radii in confined spaces
- Allows the fixing and reading of terminal markers more easily
- Switch from screw to push-in terminals while keeping the existing control cabinet layouts
- Existing accessories of the CLIPLINE complete system can also be used here



188-1739	1078960 Feed through terminal block, Grey, 2.5mm ² push-in (10)
188-1740	1078962 Feed through terminal block, Blue, 2.5mm ² push-in (10)
188-1741	1078963 Feed through terminal block, PE, 2.5mm ² push-in (10)
220-5596	1079073 Double level terminal block, Grey, 2.5mm ² push-in (50)
220-5597	1079074 Double level terminal block, Blue, 2.5mm ² push-in (50)
220-5599	1079076 Double level terminal block, PE, 2.5mm ² push-in (50)

Single Channel Electronic Circuit Breakers

- Single channel circuit breaker in only 6mm of width
- Circuits can be adjusted without any tools by means of one single push-able LED button
- Available in fixed (1-4A or 1-10A) and configurable (1, 2, 4, 6, 8A) ratings
- Electronic locking of the set nominal currents
- Multicolour LED to indicate status, healthy, tripped, under/over voltage



220-5805	1135752 1-8A configurable
220-5806	1135753 1-4A configurable
201-6326	2909902 fixed 1A
207-2803	2909903 fixed 2A
201-3968	2909906 fixed 4A
201-6203	2909908 fixed 6A
201-5438	2909910 fixed 8A

Surge Protection

- 18th edition compliant surge protection for your cabinet/installation
- Type 2 SPDs for cabinet protection from transient surges
- Back up fuse free up to 315A main fuse (Type 2)
- Type 2/3 SPDs for end of line protection of sensitive equipment



890-3736	2905333 Type 2 SPD single phase 3 wire TN-S
890-3742	2905340 Type 2 SPD 3 phase 5 wire TN-S
188-8250	2907925 Type 2/3 SPD single phase for 24Vdc system
188-8256	2907928 Type 2/3 SPD single phase for 230Vac system

EMpro Energy Meters

- Energy measurement in just 3 steps with an intuitive installation wizard
- Reduce wiring and effort with the direct connection of conventional Rogowski coils
- Easy commissioning and service with intelligent web server and display functions
- Supports most major fieldbus systems including Profinet, EthernetIP, Modbus RTU/TCP



189-2317	2907945 integrated Modbus/TCP interface
189-2318	2907946 integrated Modbus/TCP and PROFINET interface
189-2319	2907953 integrated Modbus/TCP and EtherNet/IP™ interface
220-5793	1127052 24Vdc supply with integrated Modbus/TCP interface
189-2321	2907983 integrated Modbus/TCP interface
189-2320	2907954 integrated Modbus/TCP interface, no display

QUINT4 Single Phase Power Supplies <100W

- Starting of heavy loads with dynamic boost
- Preventive function monitoring indicates critical operating states before errors occur
- High efficiency and long service life, with low power dissipation and low heating
- Space saving thanks to a narrow, slim-line design
- With push-in terminals



174-5879	2909575 24Vdc output @ 1.3A
174-5881	2909576 24Vdc output @ 2.5A
174-5884	2909577 24Vdc output @ 3.8A
192-6541	2904605 12Vdc output @ 2.5A
192-6542	2904607 12Vdc output @ 7.5A
220-5830	2904595 5Vdc output @ 5A

ACTI9 IC60H MCB 1 Pole - Curve C

- Provides excellent circuit protection particularly in combating short circuits and overload currents
- Compact in nature making wiring easier and simplifying your circuit system
- Nominal currents ranging from 1 to 63A
- Full compatibility with Acti 9 RCDs and MCCBs
- Operating voltage up to 440Vac, insulation voltage 500V



791-3275	1A
791-3284	2A
791-3281	4A
791-3290	6A
791-3293	10A
791-3297	16A
791-3307	20A
791-3300	25A
791-3304	32A

1 Pole Automotive Thermal Circuit Breakers

- Particularly suitable for installation in difficult-to-access locations
- With reset button and manual release facility
- Service short-circuit breaking capacity 300 operations at 2 × IN
- Ultimate short-circuit breaking capacity ≥3 break operations at 150A or ≥1 break operation at 2000A
- 29Vdc voltage rating



723-4819	5A
723-4821	10A
723-4825	15A
723-4834	20A

LEDtec 24V LED Indicators

- Quick and easy installation
- Bright and colour intensive light
- Very low power consumption – very energy efficient
- Temperature range -25 to +55°C
- IP rating: IP65
- Operational life: 30,000 hours
- Also available as 12V, 110V or 230V versions on the RS website



763-7911	Blue
763-7918	Green
763-7909	Red
763-7905	White
763-7915	Yellow

2 Position Key Switches

- Miniature, key-operated lock switch suitable for many low voltage applications
- Choice of common or random keyed
- 3A@ 50Vdc, 5A@ 115Vac
- Depth behind panel is 22.4mm
- Key index angle is 60°
- Other formats available



319-770	SRL5MS2850 Key type common DP-CO
319-809	SRL5MD2 Key type random DPDT-NO/NC

Series 84 Low Profile Emergency Stop Switch

- Useful when space is at a premium
- Requires a 22.5mm cut-out
- Twist to unlock clockwise
- Position indication ring black
- Application as per DIN EN ISO 13850 and EN 60204-1
- Choice of flat ribbon-cable length 300mm or plug-in terminal 2.8 × 0.5 mm



690-6960	Non-illuminated, Faston terminals, 2NC
690-6945	Non-illuminated, ribbon cable, 2NC
690-6954	Non-illuminated, ribbon cable, 1NC+1NO
690-6957	Illuminated, ribbon cable, 2NC
690-6951	Illuminated, ribbon cable, 1NC+1NO

Han E Range Connector Assembly Packs

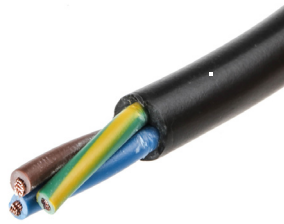
- Connector purchasing made easy
- Each pack contains a hood or housing, and male or female insert
- Examples shown male
- Rating 16A at 500V
- All components are also available separately, with an extensive range available on the RS website



492-5458	6 way side entry, M20
492-5464	6 way top entry, M20
492-5470	10 way side entry, M20
492-5486	10 way top entry, M20
492-5521	16 way side entry, M25
492-5537	16 way top entry, M25

3183Y H05VV-F Mains Cable

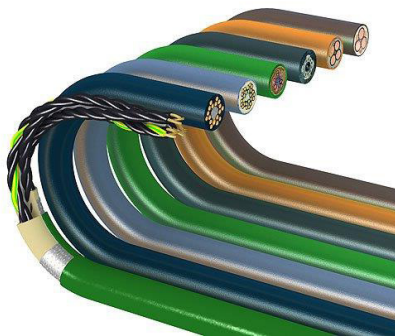
- High-quality BASEC approved H05VV-F harmonised flexible mains power cable with PVC insulation and a PVC jacket
- Wide selection available, visit our website for the full range



491-835	0.75mm ² 6A 100m
491-998	1.5mm ² 15A 100m
491-954	2.5mm ² 20A 100m
491-881	1.0mm ² 10A 100m

Cut to Length chainflex® Control Cable

- Only pay for what you need with our cut to length service on a selection of chainflex® cables
- Available in 1 to 50m lengths
- Visit our website for more details



228-8275	2 × 0.34mm ²
228-8276	2 × 0.5mm ²
228-8277	3 × 0.5mm ²
228-8285	3 × 0.75mm ²
228-8284	4 × 0.75mm ²
228-8282	4 × 2.5mm ²
228-8273	7 × 0.25mm ²
228-8278	7 × 0.5mm ²
228-8279	12 × 0.75mm ²
228-8281	12 × 1.5mm ²

Metric Nylon Cable Glands

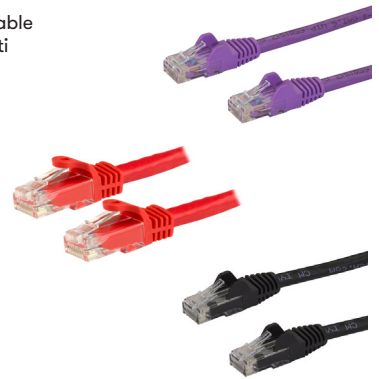
- IP68 rated glands supplied with a locknut
- Available in a wide choice of colours and sizes
- Sold in bag of 5
- For full range visit our website



669-4654	M12 × 6.5mm
669-4667	M16 × 7mm
669-4673	M20 × 14mm
669-4676	M25 × 18mm
669-4670	M32 × 25mm
669-4689	M40 × 32mm
669-4682	M50 × 38mm

Cat 6 Coloured Patch Leads

- High performance Cat 6 Ethernet cable with 100% copper for error-free Multi Gigabit 1/2.5/5Gbps connections
- Fluke patch cord tested to comply w/ANSI/TIA-568-2.D Category 6 & ETL Verifidee
- For full range visit our website



186-1984	Grey
192-9537	Red
186-1995	Blue
186-1990	Black
192-9553	Yellow

1400 Series Cable Chain

- Unique design allows rapid opening on both sides along inner radius
- Contains integrated strain relief
- 100m lengths
- Visit our website for the full range



720-2751	50.0 × 21mm; 48mm min. bend radius
756-9124	51.5 × 28mm; 38mm min. bend radius
756-9127	51.5 × 28mm; 75mm min. bend radius
756-9121	51.5 × 28mm; 100mm min. bend radius
756-9133	63.5 × 28mm; 75mm min. bend radius
756-9137	63.5 × 28mm; 100mm min. bend radius

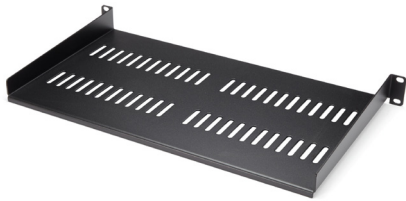
Slide On Cable Marker Kit

- Manufactured from soft, strong and durable PVC these high quality RS PRO markers have been designed to resist oil, grease and abrasion
- 0.75-3.5mm kit has 4500 markers
- 2-8mm kit has 3600 markers
- Visit our website for full contents



914-0602	0.75-3.5mm
914-0592	2-8mm

The IT Pro's Trusted Source for Connectivity Accessories



186-3003

Vented Cantilever Shelf for Server Racks - 10 in. Depth - 1U

- This 1U vented server rack mount shelf is designed to fit virtually any 19in server rack and can accommodate an internal depth of 25cm
- The vented shelf plate on the cantilever rack shelf ensures consistent airflow to effectively dissipate heat on servers.
- Constructed with SPCC commercial cold-rolled steel, the sturdy front mounted cabinet shelf ensures long term durability and supports a total weight of 44lbs/20kg

Hubs

186-3269	4-Port USB 2.0 Hub - Industrial - ESD Protection
Coming Soon	4-Port USB-C™ Industrial Hub - 3x USB-A + USB-C
898-8406	7 Port Industrial USB 2.0 Hub



Serial Adapters

186-4060	Industrial RS232 to RS-422/485 Serial Converter
123-8048	1 Port FTDI USB to Serial Adapter Cable
179-7985	1 Port FTDI USB to RS232 Null Modem Adapter
179-7972	USB to RS232 DB9 Serial Adapter Cable - M/M
123-8050	6ft USB to RS422/485 Serial Cable Adapter



Trusted by IT Professionals Since 1985



Performance Assured

Designed to meet the needs of IT Pros



Compatibility Tested

Lab tested with industry certifications



Reliability Guaranteed

Risk Free Warranty

Stainless Steel Enclosed E-Stops

- Robust Stainless Steel 316L enclosed emergency stops perfect for wash-down or harsh environments with 40mm head
- Compliant with EN ISO 13850, IEC 60947-5-1 and 60947-5-5 - twist to reset
- Padlockable versions can be locked in the 'off' or triggers position for maintenance tasks



826-4390	2NC/NO, M20 Gland Entry
826-4394	2NC/NO, 1/2" NPT Gland Entry
826-4404	Padlockable, 2NC/NO, M20 Gland Entry
826-4407	Padlockable, 2NC/NO, 1/2" NPT Gland Entry

Safety Light Barriers

- Compact single beam light barriers ideal for handling machinery, large vehicle washers and packaging machines
- Choice of 15m or 75m range with M12 connector and safe OSSD PNP outputs to performance level PLC
- Aluminium cased and sealed to IP67 - corrosion resistant and wash proof



SCHMERSAL

146-5815	SLB240 Sender, 15,000mm range
146-5816	SLB240 Receiver, 15,000mm range
146-5818	SLB440 Sender, 75,000mm range
146-5820	SLB440 Receiver, 75,000mm range

Safety Rated Limit Switches

- Limit switches with safety rated snap-action contacts housed in robust glass fibre reinforced plastic bodies
- M20 threaded gland entry and IP67 sealed
- UL/CSA/CE certified



179-7568	Pin Plunger
179-7567	Roller Plunger
179-7569	Adjustable Roller Lever
179-7570	Roller Lever

PILZ PNOZ sigma Configurable Safety Relay

- Safety relay adapted for emergency stop pushbuttons, safety gates and light curtains
- Removable terminals with connection via spring terminals
- Display LEDs for relay status, with expandable option



155-939	PNOZ S1, 24VDC, 2NO 1NC
156-083	PNOZ S3, 24VDC, 2NO 1NC
156-099	PNOZ S2, 24VDC, 3NO 1NC 1SC
156-106	PNOZ S4, 24VDC, 3NO 1NC 1SC
156-112	PNOZ S4, 48-240V, 3NO 1NC 1SC
155-822	PNOZ S5, 0-300S, 24VDC, 0-300S
155-816	PNOZ S7 Expansion Module, 4NO 1NC

HYGIECAM Interlock Safety Switches

- Kobra HYGIECAM (K-SS) series interlock safety switches with hygienic 316 stainless steel body
- Body format and mounting points match popular plastic bodied interlock switches while offering IP67/69K protection
- Actuator must be purchased separately - various options available including stainless steel



826-3896	2NC + 1NO safety contacts
826-3906	3NC + 1NO safety contacts
826-4053	140111 SS316 Heavy Duty Actuator
826-4035	140107 Standard Actuator
826-4050	140110 Flexible Actuator

G9SE Dual Channel Safety Relays

- G9SE Safety relays are design to be compact and simple, yet flexible and offer PLe/Cat. 4 safety standards
- DPST output version (201) suitable for e-stops, guard switches and opto-sensors is just 17.5mm wide, others are 22.5mm
- Screwless terminals cut install times while eliminating loose connections



890-3389	G9SE-201-DC24 DPST-NO Safety Outputs
890-3382	G9SE-401-DC24 4PST-NO Safety Outputs
890-3386	G9SE-221T05-DC24 4PST-NO with 5sec off-delay
890-3395	G9SE-221T30-DC24 4PST-NO with 30sec off-delay

Flashguard QBS Beacons

- Beacon with xenon flash tubes are fitted with a diffuser for greater visibility and spread of light
- Low profile design that is waterproof and is supplied with mounting gasket and 40cm cable
- Supply voltage 12/24Vdc



klaxon

309-5972	Amber
309-5988	Red
309-5966	Blue
312-5398	Green
309-5994	Clear

Kompakt 37 Series Signal Towers

- Robust unit has a polycarbonate housing that's highly resistant to impacts, while still being lightweight
- LED bulbs offer bright light intensity and have an extremely long lifespan
- Supplied pre-assembled for quick and easy installation
- For full range visit our website

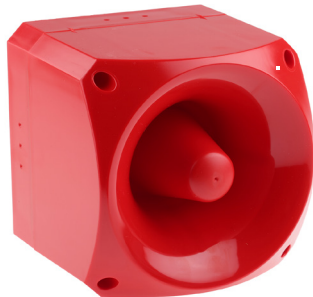


WERMA

849-5374	Red, green
849-5370	Red, amber, green

Nexus 110 Sounders

- Nexus sounders have 3 alarm stages, 64 tones and a volume control for greater flexibility
- First-fix, wire to base technology
- IP66 rated
- 5 cable entries
- UL V0 rated fire retardant red polycarbonate case



klaxon

539-4697	10-60Vdc
907-6306	24-48Vac
539-4726	110/230Vac

LED Flashing Beacons

- 4 x 4W LED provide a working life of more than 50,000 hours Meets IP67 internal protection standard (weatherproof)
- Offers extreme temperature reliability: -30°C to +50°C
- 4 flash patterns - static, single, double & quad
- 2-year warranty



907-5971	Red 45mm high
907-5977	Amber 45mm high
907-5999	Red 95mm high
907-5996	Amber 95mm high

YL40 Yodalight Sounder Beacons

- Multi-purpose audible and visual signalling device suitable for a wide range of industrial applications
- 32 user selectable tones with a max output of 108dB at 1m
- Flame retardant IP65 housing
- 115Vac also available, visit our website for full range



197-4628	Amber 24Vdc
197-4640	Amber 230Vac
197-4632	Blue 24Vdc
197-4645	Blue 230Vac
197-4633	Clear 24Vdc
197-4646	Clear 230Vac
197-4630	Green 24Vdc
197-4642	Green 230Vac
197-4631	Opal 24Vdc
197-4644	Opal 230Vac
197-4629	Red 24Vdc
197-4641	Red 230Vac

Sonos 24Vdc Voice Siren

- Combines standard sounder signals with a synchronised voice message to reduce confusion and distress during an active alarm
- Choice of up to 7 messages
- 106dB tone and 80dB message outputs
- Easily retro-fits to existing installations
- Flame retardant polycarbonate

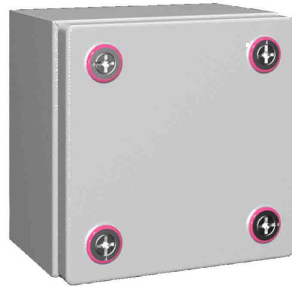


klaxon

907-6340	Red shallow base
907-6359	White deep base
907-6365	Red with lens shallow base
907-6356	Red with lens deep base

KX Small Enclosures

- Steel enclosures ideal for housing electronic, electrical and mechanical components, equipment, and devices
- IP66 rating prevents ingress of environmental contaminants such as dust or water
- NEMA 4 protection category
- For full range of sizes, visit our website



202-3818	150(W) x 150(H) x 80(D) mm
202-3826	150(W) x 150(H) x 120(D) mm
202-3821	200(W) x 200(H) x 80(D) mm
202-3836	200(W) x 200(H) x 120(D) mm
202-3884	200(W) x 200(H) x 120(D) mm (with chassis and gland plate)
202-3901	200(W) x 300(H) x 155(D) mm (with chassis and gland plate)
202-3841	300(W) x 300(H) x 120(D) mm

AX Steel Enclosures

- AX compact enclosure is a basic enclosure which is ideal for housing various electronic, electrical and mechanical components, equipment, and devices.
- IP 66 protection
- NEMA 4 protection category
- For full range, visit our website



202-3899	300(W) x 300(H) x 210(D) mm
202-3900	300(W) x 400(H) x 210(D) mm
202-3906	380(W) x 600(H) x 210(D) mm
202-3907	400(W) x 500(H) x 210(D) mm
202-3908	500(W) x 500(H) x 210(D) mm
202-3915	600(W) x 600(H) x 250(D) mm
202-3923	600(W) x 760(H) x 350(D) mm

AX and KX Accessories

- Commonly used accessories for the AX and KX range of enclosures
- SZ wall mounting bracket is ideal for convenient one-person assembly of wall-mounted enclosures, even in confined spaces
- Mini-comfort handle is used with lock inserts or 40 and 45mm semi-cylinders, as well as lock and push-button inserts
- Lock insert for use with the mini comfort handle is supplied with two keys



224-7046	SZ wall mounting bracket
202-3972	Mini-comfort handle
283-6126	Lock insert no. 3524E

TopTherm Series Filter Fan

- Easy to assemble, highly efficient design that enables greater pressure stability and more air flow
- Grille latch allows fast filter replacement
- Supply voltage 230Vac is connected via spring clamp terminals
- Visit our website for full range



756-9758	Fan 20m³/h 116.5m²
756-9843	Filter for 20m³/h 116.5m² fan
756-9767	Fan 55m³/h 148.5m²
756-9840	Filter for 55m³/h 148.5m² fan
756-9777	Fan 105m³/h 204mm²
756-9852	Filter for 105m³/h 204mm² fan

AX Glass Reinforced Plastic Enclosures

- Compact plastic enclosure is ideally suited to outdoor applications
- There are numerous mounting bosses inside the enclosure which allow individual interior configuration on a 25mm pitch pattern
- NEMA 4 protection category
- UL94 V-0 fire protection
- IP66 rated



217-5180	250(W) x 350(H) x 150(D) mm
217-5181	300(W) x 400(H) x 200(D) mm
217-5182	400(W) x 400(H) x 200(D) mm
217-5183	400(W) x 600(H) x 200(D) mm
217-5187	600(W) x 600(H) x 200(D) mm
217-5188	600(W) x 800(H) x 300(D) mm
217-5191	800(W) x 1000(H) x 300(D) mm

1554 Series Enclosures

- High quality ABS and PC sealed enclosures with IP66 are ideal for machine applications
- Casketed lid with two piece "tongue & groove" construction provides protection against access of oil, dust and water
- For full range of sizes visit our website



230-6465	88.9 × 61.0 × 88.9mm
230-6464	88.9 × 88.9 × 88.9mm
230-6469	180.3 × 61 × 119.4mm
230-6480	180.3 × 88.9 × 119.4mm
230-6483	200.7 × 88.9 × 119.4mm
230-6488	238.8 × 160 × 119.4mm

IP69K Stainless Steel Enclosures

- Lockable wall mounted enclosures, with IP69k protection ensuring the contents will be safely stored and protected
- Pull out hinge on door allows it to be removed for easy access
- Double lipped edge to ensure higher strength and ease of installation



758-7034	200 × 300 × 300mm
758-7037	200 × 300 × 400mm
758-7220	200 × 400 × 400mm
758-7223	200 × 400 × 600mm
758-7043	300 × 800 × 600mm

24Vdc Axial Cooling Fans

- DC sealed sleeve axial fans provide a general purpose, compact and reliable solution to a variety of applications
- Sealed sleeve technology provides a cost-effective alternative to ball bearing fans, with a longer life expectancy (>50,000 hours) than standard sleeve bearing fans
- Wide range available - visit our website for other options



668-8801	40 × 40 × 10mm 1.4W 11.4m³/h
668-8814	40 × 40 × 20mm 1.7W 15.3m³/h
541-5205	60 × 60 × 15mm 1.4W 27.2m³/h
668-8836	60 × 60 × 25mm 3.6W 39.1m³/h
668-8833	80 × 80 × 25mm 2.4W 68m³/h
703-3448	80 × 80 × 38mm 13W 168.2m³/h
541-5435	120 × 120 × 32mm 6W 203.9m³/h
541-5407	120 × 120 × 38mm 7W 178.4m³/h

SM Compact Floor Standing Enclosures

- Manufactured from sheet steel with a surface finish of epoxy-polyester powder supplied with mounting plate
- IP55 protection conforming to IEC 60529
- IK10 protection conforming to IEC 62262
- Certifications UL, BV, DNV
- Green premium product
- Mercury free



220-0210	1200 × 800 × 300mm
220-0211	1400 × 600 × 400mm
220-0214	1600 × 600 × 300mm
220-0216	2000 × 600 × 500mm
220-0215	2000 × 1000 × 400mm
220-0209	2000 × 1200 × 400mm

A48 Fibre Glass Enclosure

- IP66 enclosure with clear front door is ideal for highly corrosive environments
- Flame retardant to UL 94-5V
- Integrated threaded insert for mounting plates which are supplied separately
- Approvals UL, CSA, VDE
- Supplied with wall mounting bracket and fixing kit



258-7509	167 × 267 × 216mm
258-7515	167 × 318 × 267mm
258-7521	219 × 370 × 319mm
258-7537	219 × 420 × 370mm

HVR Pentagon Anti-Condensation Heaters

- Designed for use where a low wattage heater is required to prevent condensation
- Comprises a vitreous enamelled resistor mounted in a sheet steel case with removable sheet steel cover
- Input voltage 230Vac
- For full range visit our website



603-328	100W
500-112	40W
605-605	60W
605-582	20W
500-134	80W

UNIK Range

- Druck's UNIK5000 is a high performance, configurable solution to pressure measurement
- Ranges from 70 mbar (1 psi) to 700 bar (10,000 psi)
- Accuracy to $\pm 0.04\%$ Full Scale (FS) Best Straight Line (BSL)
- Operating temperature ranges from -55 to $+125^{\circ}\text{C}$ (-67 to $+257^{\circ}\text{F}$)
- Over 2 million unique configurations possible



746-3445	X5072-TB-A1-CA-H1-PA -1 to 1.6 bar G
746-3470	X5072-TB-A1-CA-H1-PA 10.0 bar G
746-3477	X5072-TB-A1-CA-H1-PA 16.0 bar G
746-3499	X5072-TB-A1-CA-H1-PA 250 bar SG
746-3650	X5072-TB-A2-CA-H1-PA 100 bar SG

Calibration Unified Package

- Druck's Calibration Unified Package is a total end-to-end fully self-contained pressure test & calibration system
- Includes Genii Multifunction pressure, temperature and electrical calibrator
- For use with interchangeable pressure modules
- Complete asset calibration management for a paperless calibration process
- When accuracy and reliability are required in any environment



199-3840	DPI620PC-2barg
199-3841	DPI620PC-7barg
199-3842	DPI620PC-20barg
199-3844	DPI620SPC-7barg
199-3845	DPI620SPC-20barg

Handpump Range

- Druck's high-quality hand pump range is designed to quickly and easily generate pressure sources with a simple hand motion
- Fast, efficient and cost-effective solution pressure generation
- Portable, lightweight pressure source for a range of field applications
- Option for pneumatic and hydraulic pressure
- Built in vernier to offer precise pressure control



528-9696	PV210
529-3544	PV211-P-4019
529-3550	PV212-HP-700-4018
710-9022	PV623-IS

Time Electronics, Loop Calibrator

- Loop-mates designed for the calibration, testing and measurement of process loops
- Powered by a PP3 battery both units provide up to 40 hours of continuous use
- LCD display
- internal loop drive supplies, which can be used to power the loop



537-2580
537-2603
423-1630

1030 MicroCal Voltage and Current Source

- Portable voltage and current calibrator for general purpose signal injection
- It is suitable for voltage and current loop signal simulation as well as thermocouple simulation
- Three voltage ranges give an adjustable output from $10\mu\text{V}$ to 1V and two current ranges for $10\mu\text{A}$ to 100mA
- An additional 0 to 8V output can be obtained by using a precision $1\text{K}\Omega$ resistor that is supplied with the unit



610-348	1030 RS-232 tester
611-745	With RS Calibration
667-108	With UKAS Calibration

MIT200 Insulation & Continuity Testers

- Insulation testing to 1000M Ω
- Continuity testing at 200mA down to 0.01 Ω
- Live circuit warning (voltage display) and test inhibit
- Digital/Analogue display
- CATIII 600V
- Choice of 2 or 3 test voltages depending on model



Megger.

535-3185 MIT220 250V/500V

535-3191 MIT230 250V/500V/1000V

FLIR C5 Thermal Imaging Camera

- Featuring a thermal camera, visual inspection camera, and LED flashlight, the powerful FLIR C5 makes it easy to identify hidden problems
- Quickly find hidden faults and reduce diagnostic time
- Pinpoint and communicate potential issues faster
- With 3.5 inch integrated touchscreen, 160 x 120 true thermal imager and 5-megapixel visual camera
- Thermal camera measures -20 to 400°C



201-6980

Fluke 170 Series Multimeters

- Comprehensive functionality from this popular range which offers precision, reliability and ease of use
- The ideal choice for troubleshooting and repairing electrical and electronic systems
- True RMS capability ensures accurate results even when testing on irregular AC circuits
- The Fluke 177 adds backlit display, and the Fluke 179 further adds the ability to take temperature readings



FLUKE

394-4470 Fluke 175

394-4486 Fluke 177

394-4492 Fluke 179

True RMS AC/DC Clamp Meter

- Measures current between 0.5Aac/dc and 1000Aac/dc
- Large, easy-to-read backlit LCD display
- Additional measurements for resistance, capacitance, frequency, diode test, duty cycle and continuity and features a dual input thermocouple temperature and non-contact voltage detector
- Designed for heavy duty use in tough environments



200-3702

Fluke 805 FC Vibration Meter

- The reliable, repeatable, accurate way to check bearings and machine health
- Consistent quality: take accurate, reliable measurements at
- both low and high frequency ranges
- Store results in the cloud and share data with your team remotely
- Minimise measurement variations caused by device angle or contact pressure using innovative sensor design



FLUKE

194-6811

RS50 Series Digital Thermometers

- Easy to read LCD display
- RS51 and RS52 offers min/max readings as well as °C or °F
- The RS53II and RS55II further offers a 16,000 reading datalogger, as well as support for J & K Type thermocouples
- 2x channel input models RS52 and RS55II also offer differential measurement
- Single Type K bead thermocouple supplied for each input



123-3215 RS51 K Type 1 input

123-3216 RS52 K Type 2 inputs

123-3217 RS53II J or K Type 1 input, datalogger

123-3218 RS55II J or K Type 2 input, datalogger

PC15250 Phase Sequence Indicator

- Simple and quick 3 phase continuity and rotation indicator ensures 3-phase outlets and machines are wired correctly
- Retractable GS38 probe shields give a choice between using long, exposed tips for reaching inaccessible contacts, and safer, shorter lengths for increased safety
- Input voltage range: 50V to 600Vac (Phase to Phase)
- Conforms to GS38 and BS EN61557-7, CAT IV 600V



782-4424 PC15250

781-8794 With RS Calibration

VDMA Profile Cylinders

- CP96-C series double-acting pneumatic cylinders feature both air and bumper cushioning reducing cycle time and the noise at the end of the stroke
- Full range available online - visit our website for more details



916-6730	32mm bore 25mm stroke
916-6752	32mm bore 80mm stroke
916-6724	32mm bore 160mm stroke
916-6733	32mm bore 200mm stroke
916-6755	32mm bore 500mm stroke
916-6761	40mm bore 100mm stroke
916-6796	50mm bore 100mm stroke
917-8755	63mm bore 80mm stroke

Deep Groove Double Shielded Bearings

- Versatile self-retaining bearings with solid outer rings, inner rings and ball and cage assemblies
- Durable in operation and easy to maintain, suitable for high speed applications
- Gap seals on both sides and lubricated for life with high-quality grease



137-1582	10mm ID 26mm OD
137-1645	12mm ID 32mm OD
137-1591	15mm ID 32mm OD
137-1596	17mm ID 35mm OD
137-1601	20mm ID 42mm OD
137-1719	25mm ID 62mm OD
137-1667	30mm ID 62mm OD
137-1671	35mm ID 72mm OD
137-1450	40mm ID 90mm OD

20 Tooth Aluminium Timing Belt Pulleys

- Extensive range of High Torque Drive (HTD) timing pulleys in pilot bore type and taper lock bush type
- Material aluminium, flanges steel
- HTD, CXP and CXA belts are all designed to run on these pulleys
- For full range visit our website



778-4718	6mm width 2mm pitch
286-4547	6mm width 2.5mm pitch
778-4770	6.4mm width 2mm pitch
146-5385	9mm width 3mm pitch
286-5663	10mm width 5mm pitch
182-666	14.3mm width 5mm pitch
146-5404	15mm width 3mm pitch
745-696	16mm width 5mm pitch

RED POWER 3 Drive Belts

- V-belts offering 50% more power capacity versus standard belts while still being competitively priced
- Maintenance free and electrically conductive with temperature range -30°C to +100°C
- Choose from over 60 sizes in stock - visit our website and search 'optibelt red power'



178-0759	SPZ 1250mm
178-0760	SPZ 1320mm
178-0692	SPA 1250mm
178-0696	SPA 1500mm
178-0703	SPA 1800mm
178-0705	SPA 2000mm
178-0708	SPA 2240mm
178-0762	SPZ 2360mm

Back Entry Pressure Gauges

- Suitable for all gaseous and liquid media that will not obstruct the pressure system or attack copper alloy parts
- Can be used within small capacity compressors, medical engineering, heating and air conditioning applications
- Dual scale - bar and psi
- 50mm diameter



822-4018	4 bar
822-4011	6 bar
822-4015	10 bar
218-0137	16 bar
218-0138	25 bar

Polyurethane Pneumatic Tubing

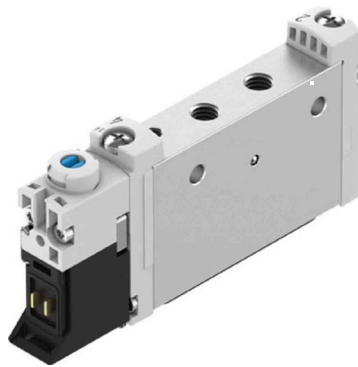
- Flexible silicone free polyurethane tubing ideal for in panel routing of air circuits supplied in 30m reels
- Can be used for both pneumatic control and chemical transfer lines from -50 to +55°C
- Full range from 4 to 12mm OD available online



917-2369	6mm black
917-2387	6mm blue
917-2378	8mm black
917-2381	8mm blue
917-2393	10mm black
917-2371	10mm blue

VUVG Solenoid Valves

- Compact range of valves
- Minimal installation space
- Voltage options
- High flow rate
- Flexible modular system



121-5890	5/2 Sol/Pneu Spring, 14mm width, G1/8, 3 pin
202-1320	5/2 Sol/Mech Spring, 10mm width, G1/8
175-2143	5/2 Sol/Pneu Spring, 14mm width, G1/8
121-5880	5/2 Sol/Pneu Spring, 10mm, M5, 3pin
136-6936	5/2 Sol/Mech Spring, 10mm width 24Vdc
202-1385	5/2 Sol/Sol, 14mm width, G1/8

MS Series Air Preparation Units

- Filter, regulator and lubricator functions in a single unit
- High flow rate
- Highly efficient in removing contaminants
- Good control characteristics
- Minimal pressure hysteresis



136-6744	G $\frac{1}{4}$ FR/L 0.5-12 bar, 40 μ m, 900l/m
202-3038	G $\frac{1}{2}$ FR/L 0.3-7 bar, 40 μ m, 4800l/m
136-6743	G $\frac{1}{2}$ FR/L 0.5-12 bar, 40 μ m, 3700l/m
136-7051	G $\frac{1}{4}$ " 0.5-12 bar F/R with On/Off Valve, 40 μ m, 1700l/m
202-3062	G $\frac{3}{8}$ FR/L 0.5-12 bar, 40 μ m, 3500l/m
136-7052	G $\frac{1}{2}$ " 0.5-12 bar F/R with On/Off Valve, 40 μ m, 5100l/m

Digital Pressure Sensors - SPAN-B

- PNP / NPN switchable
- Pressure and vacuum
- Pressure and vacuum Breaking
- High Contrast display
- Compact design



126-0229	-1 to +1bar, 1/8
175-2231	-1 to +1bar, IO-Link®
175-2239	-1 to +1bar, 4mm push in
175-2237	-1 to +1bar, 1/8

Flow Sensors SFAW

- Input connection options
- With optional integrated temperature sensor
- Connection to higher-level systems via 2 switching outputs, an analogue output and/or an IO-Link® interface
- Certification: RCM, c UL us Listed [OL]
- Rotatable display, 90° anticlockwise and 180° clockwise



175-2241	1.8 to 32 l/m, G $\frac{1}{2}$, IO-Link®
175-2242	5 to 100 l/m, G $\frac{3}{4}$, IO-Link®
175-2243	5 to 100 l/m, G1, IO-Link®

Guided Drive - DFM

- Drive and guide unit in a single housing
- High resistance to torques and lateral forces
- Plain or recirculating ball bearing guide
- Wide variety of mounting and attachment options
- Wide range of variants for customised applications



121-5383	DFM-16-20-P-A-GF 16mm x 20mm
121-5382	DFM-16-10-P-A-KF 16mm x 10mm
121-5412	DFM-25-25-P-A-GF 25mm x 25mm
121-5381	DFM-16-10-P-A-GF 16mm x 10mm
121-5367	DFM-12-20-P-A-GF 12mm x 20mm
121-5377	DFM-12-80-P-A-GF 12mm x 80mm

Round Line Cylinder DSNU - PPS

- Very durable cylinder based on ISO 6432 with self-adjusting end-position cushioning and extensive accessories
- Wide range of variants for customised applications
- Good running performance and long service life
- Self-adjusting pneumatic end-position cushioning which adapts optimally to changes in load and speed
- For position sensing



121-4735	DSNU-16-50-PPS-A 16mm bore, 50mm stroke
121-4650	DSNU-25-100-PPS-A 25mm bore, 100mm stroke
121-4716	DSNU-16-125-PPS-A 16mm bore, 125mm stroke
121-4688	DSNU-25-50-PPS-A 25mm bore, 50mm stroke
121-4729	DSNU-16-25-PPS-A 16mm bore, 25mm stroke
121-4726	DSNU-16-20-PPS-A 16mm bore, 20mm stroke

VDE Screwdriver Sets

- Ergonomic screwdrivers with soft grip handle for great grip which reduces fatigue
- 2-piece set contains: PZ2 x 100mm, 4.0 x 100mm
- 7-piece set contains: PZ1 x 80mm, PZ2 x 100mm, 2.5 x 75mm, 3.5 x 75mm, 4 x 100mm, 5.5 x 125mm and voltage tester
- 10-piece set contains: PH1 x 80mm, PH2 x 100mm, PZ1 x 80mm, PZ2 x 100mm, 2.5 x 75mm, 3.5 x 75mm, 4.0 x 100mm, 5.5 x 125mm, 6.5 x 150mm and voltage tester



STANLEY

- 177-1362** 2-piece
- 177-1363** 7-piece
- 177-1364** 10-piece

HG 2320 E Heat Gun

- Digitally controlled heat gun with safety heat indicator and four memory programmes
- Maximum temperature 650°C and airflow of 500L/min
- Ideal for shrinking heat shrink tubing, film or packaging; stripping paint; drying out wood; softening adhesives or thawing frozen pipes



steinel
520-2914

18V Combi Drill and Impact Driver Twin Pack

- Kit containing the G-5B 18V-55 combi drill and one of Bosch's most powerful 18V impact drivers, the GD-X 18 V-200 with brushless motor
- Impact driver is extremely powerful due to 200Nm of torque
- Comes with 2 x 3.0Ah Li-Ion batteries



BOSCH
201-9798

3-Piece Plier Set

- Professional plier set with non-slip ergonomic handles and polished heads
- Set contains: 180mm combination pliers, 160mm diagonal pliers and 250mm Cobra waterpump pliers



815-6344

DUO Tap and Drill Packs

- Makes selection of tap and correct pre-hole drill simple
- Pack contains: HSS ISO straight flute tap (E500) for threading through or blind holes up to 1.5XD and drill
- Tap lead is second cut



- 174-0101** M3 tap 2.5mm drill
- 174-0102** M4 tap 3.3mm drill
- 174-0104** M5 tap 4.2mm drill
- 174-0105** M6 tap 5mm drill
- 174-0106** M8 tap 6.8mm drill
- 174-0107** M10 tap 8.5mm drill
- 174-0108** M12 tap 10.2mm drill

Insulated Crimp Kit with Tool

- Handy crimp terminal kit containing 800 high-quality colour coded insulated terminals in a range of popular sizes along with a compact crimp tool
- Contains crimps for use with wire size range of 0.5-6mm²
- For full contents visit our website



613-9952

TMX098 98 Piece Socket & Bit Set

- Professional, light weight and easy to store
- kit containing a range of sockets in 1/4", 3/8" &
- 1/2" drive, combination spanners, screwdrivers
- and hex & TX bits in a hard wearing case
- Chrome vanadium satin finish sockets and spanners
- Designed and manufactured to DIN and ISO standards



212-4636