

ALL THE RIGHT INGREDIENTS

Find the perfect recipe of products
and solutions to help you predict,
prevent and avoid downtime.

FOOD & BEVERAGE



export.rsdelivers.com

REDUCE DOWNTIME

We know how costly downtime can be and whilst we can't always predict the future, we do have a range of preventative solutions to help you stay proactive and keep your business running.

You need products designed to meet the needs of the sector, so we've a wide range from trusted brands like Fluke, FLIR, Ledvance, Rocol, SKF and Tsubaki, plus many more - to fit your needs. Everything you need, including predictive maintenance sensors and devices... all with a choice of delivery options to suit you.

Our product ranges help you:

01

Get insight into the condition of machinery, and help you spot any deterioration that would predict a future breakdown - with hand-held or permanently installed instruments

02

Prevent breakdowns by using parts that are highly tolerant of the environment in which they operate, e.g. IP69K rated parts

03

Prevent breakdowns by using highly durable, reliable parts and equipment whether that be low-/no-maintenance mechanical components, LED lighting, or the right lubrication

Find out more at
export.rsdelivers.com



And that's not all!

We have in-house experts on-hand to support you with safeguarding your operations, whether that's predictive maintenance solutions like RS Industria, or our proactive condition monitoring service providing valuable insight into the health and reliability of your assets, helping to prevent premature failures.

Read more about these services on pages 4 and 5.

Avoiding downtime is your priority – helping you achieve it, is ours.



Amazon Monitron

- Detect abnormal conditions in industrial equipment and enable predictive maintenance
- This end-to-end system uses machine learning to identify machine issues before they occur
- Start monitoring equipment in minutes with easy installation and automatic, secure analysis through the Amazon Monitron end-to-end system
- Improve system accuracy continuously as Amazon Monitron learns from technician feedback entered in the mobile and web apps



229-1932 Vibration sensor

229-1931 Intelligent gateway

Fluke 810 Vibration Tester

- The most advanced troubleshooting tool for mechanical maintenance teams who need an answer now
- The unique diagnostic technology helps you quickly identify and prioritise mechanical problems, putting the expertise of a vibration analyst in your hands
- Puts you one step ahead by using a simple step-by-step process to report on machine faults the first time measurements are taken, without prior measurement history
- The combination of diagnoses, severity and repair recommendations help you make informed maintenance decisions and address critical problems first



744-2192

DA10 Data Stations for IIoT

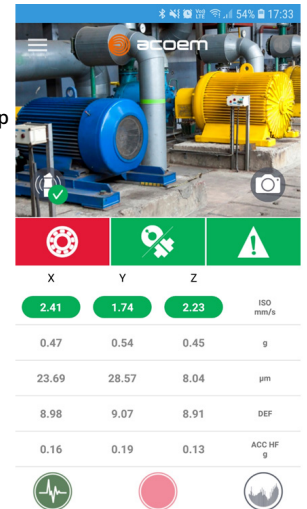
- The DA10 allows you to easily unlock valuable data from legacy equipment and share with the plant floor, enterprise or cloud platforms with ease
- Offers native support for over 300 industrial drivers, out-of-box OPC UA server capability, and simple point-and-click configuration of MQTT connectors
- Features a USB port for configuration and 1x RS232, 1x RS232/RS485 and 1x 10/100 BASE-T(X) Ethernet port



200-6439

ACOEM Bearing Defender Vibration Meter

- Offers instant advice on the health of your bearings. It makes sure that your machine can keep spinning without risk
- Easy to use and incredibly fast
- Clear red/amber/green indication via an app of: 3D bearing health, 3D misalignment or unbalance, 3D miscellaneous defects
- Physical contact enabled by screwfit contact point or bipolar magnet (both included in pack)
- Only 42mm diameter x 116mm height, and operating temperature range -20°C to 60°C



206-3807

Oil Test Kit and Analysis Service

- Poor or inadequate lubrication is the primary cause of 70% of industrial equipment failures
- This is a high quality and easy to use oil testing kit that can be used to monitor the condition of lubricating oil, especially as part of preventative maintenance, and reducing unwanted and costly downtime
- Identify issues like adverse mechanical wear, oil health, moisture ingress, lubricant contamination
- The kit provides everything you need to collect up to 10 in-service oil samples and return to our laboratory, including full analysis and reporting



221-4799

Lambda® Lube-Free Chain

- No additional lubrication needed, eliminates contamination and is environmentally friendly
- Reduces maintenance and replacement costs, and decreases overall downtime
- Increases sprocket life
- Sintered bushings with NSF-H1 high-temperature food-grade lubricant for optimal performance in lube-free environments



183-0871 O8B-1 12.7mm pitch, 5m

183-0872 10B-1 15.87mm pitch, 5m

183-0873 12B-1 19.05mm pitch, 5m

183-0875 16B-1 25.4mm pitch, 5m

RS MAINTENANCE SOLUTIONS

The RS Maintenance Solutions suite of predictive maintenance solutions improve asset reliability and help you develop and gain control of your maintenance strategy, ensuring risks are mitigated before they become plant-stoppers.

We offer an array of fully integrated, end-to-end service solutions to fulfil all your maintenance needs.

These services range from diagnosis through to supply and fit. They turn data into insights to predict faults before they become failures, helping you build resilience into your facility.

Below are the six areas covered by our maintenance solutions, combining onsite services, laboratory analysis and cloud based digital solutions.

CONDITION MONITORING

Helps you spot the signs of an impending mechanical failure

MANAGED LUBRICATION

Poor application of lubrication will eventually lead to failures

CALIBRATION

Our UKAS accredited lab means you never again need doubt the accuracy of your equipment

OIL ANALYSIS

All oil samples are analysed by a team of ICML certified RS scientists

RS INDUSTRIA

Enables you to unlock the power of your asset data

ENERGY MANAGEMENT

Can help you cut costs and reduce energy consumption and losses



CONDITION MONITORING

Keep your assets running



Our condition monitoring services can help you spot signs of significant changes in equipment that could be indicative of an impending failure. We work with customers to understand their challenges and create a condition monitoring maintenance strategy which works for their business, focuses on common reliability issues, and keeps budgets on track while maintaining uptime.

RS CALIBRATION

Remove the doubt from your equipment



Confidence in the accuracy of your equipment is vital. Our UKAS ISO17025 accredited calibration laboratory helps to ensure the compliance and accuracy of your instruments, whether you purchased these from RS or elsewhere. Our service provides full traceability to either national or international standards through either RS or UKAS certification.

RS INDUSTRIA

Cloud Connected Condition Monitoring



RS Industria is an Industrial Data Platform that enables customers to reduce manufacturing costs, increase operational efficiency and lower energy consumption, by creating continuous insight of plants and process in a way that is simple, fast and affordable.

MANAGED LUBRICATION

Keeping your equipment running smoothly



A well-implemented lubrication programme is one of the most important and most frequently overlooked factors with regard to machine health. Poor application of lubrication and inadequate record keeping will eventually lead to elevated failures, machine downtime and production losses. Our tailored solution ensures the right lubricant, at the right point, at the right time – every time.

OIL ANALYSIS

Spot potential issues early



Oil analysis is an excellent indicator of issues developing within a mechanical system. A single, detailed analysis of an oil sample can be a valuable preventative maintenance tool. Trending wear, contamination and lubricant chemistry all provide insight into potential problems before they escalate to become a more serious issue. Our ICML certified oil scientists will assess your oil sample in our purpose-built lab.

ENERGY MANAGEMENT

Reducing energy usage and loss



We have a range of services which can help drive down energy consumption and losses. We support our customers in utilising the right products and solutions to make their energy management strategy effective and their operations and plant energy efficient. Our energy management solutions can be tailored to your individual needs, and include air leak, steam loss and lighting surveys with the data collected over time providing crucial insight into the site's energy usage.

FLIR Ex-Series™ Thermal Imaging Cameras

- Powerful, cost-effective, easy-to-use troubleshooting tools for electrical and mechanical predictive maintenance
- Excellent resolution sensors to help with detail, further aided by MSX to enhance IR images with visual detail for better perspective and interpretation
- Accurately measures temperature from -20°C to 550°C
- Wi-Fi connectivity to smartphones and tablets via the FLIR Tools® Mobile app makes sharing images from any location easier, so you can review and compare images to make critical decisions faster



- 184-6123** FLIR E6-XT IR resolution 240 x 180 pixels
- 184-6124** FLIR E8-XT IR resolution 320 x 240 pixels

Fluke 1736 and 1738 Three-Phase Power Loggers

- Make critical power quality and energy decisions in real-time
- Have more visibility into the data you need to optimise system reliability and savings. These are ideal for conducting energy studies and basic power quality logging, automatically capturing and logging over 500 power quality parameters
- Identify issues that can cause critical machine downtime, measuring all three phases and neutral with included 4 flexible current probes



- 900-9974** FLUKE-1736/EUS Power Logger
- 900-9986** FLUKE-1738/EUS Power Logger - advanced version

Ultrasonic Leak Detector

- Detect a variety of leakage events with the instrument's 20kHz to 90kHz frequency range
- Quality headphones help identify the source of the leak
- Parabola accessory directs the ultrasound towards the sensor
- Three filters to remove main noise frequencies in noisy environments
- Detachable extension provides additional reach in hard to reach areas
- 6.35cm LCD display with bargraph



196-2986

RS730 Thermal Imaging Camera

- Often, developing faults reveal themselves through generating heat
- This thermal camera is great for spotting these problems early, so you can intervene before the problem develops
- Display: 2.8" LCD, 240 x 320 pixels
- IR resolution: 160 x 120 pixels
- Image frequency: 50Hz
- Battery operating time: approx. 4 hours
- Integrated LED light



136-5668

Fluke ii900 Ultrasonic Leak Imager

- Leaks in compressed air, gas, steam and vacuum systems hurt both production uptime and the operations bottom line
- The Fluke ii900 enables maintenance teams to quickly and accurately locate air, gas and vacuum leaks in compressed air systems; even in noisy environments
- The 7" LCD touchscreen overlays a SoundMap™ on a visual image for quick leak location identification
- The straightforward, intuitive interface allows technicians to isolate the sound frequency of the leak to filter out loud background noise
- In a matter of hours, the team can inspect the entire plant – even during peak operations



187-6163

SKF QuickCollect Vibration Sensors

- Get access to machine expertise, any time you need it
- SKF QuickCollect combines an easy-to-use sensor with mobile apps which enables you to quickly and easily identify your machine condition and share inspection, process and machine health data
- You can also tap directly into SKF's remote diagnostic centres for expert analysis and advice. Easy to get started straight away: with entry-level setup costs, there's no need to make the case for capital expenditure



- 251-4911** CMDT 391-K-SL standard sensor
- 251-4909** CMDT 391-EX-K-SL hazardous area sensor
- 251-4912** CMDT 391-PRO-K-SL standard sensor, carrying case and accessories
- 251-4910** CMDT 391-EX-PRO-K-SL hazardous area sensor, carrying case and accessories

Belt Alignment Tools

- Poorly aligned drive belts or pulleys can significantly contribute to noise, vibration and wear leading to premature bearing failure and costly machine downtime
- This SKF belt-alignment tool lets you check your pulleys, conveyors and belt drives are properly aligned with accuracy and ease
- This laser alignment tool is quick and accurate, delivering precise measurements that will help you reduce friction, energy consumption and noise from unnecessary vibration in your machinery
- Easy to attach using powerful magnets, and uses a laser so you can easily see and adjust both alignment and belt tension



821-5077 TKBA 10 (up to 3m between pulleys)

821-5086 TKBA 20 (up to 6m between pulleys)

Drive Belt Tension Tester

- Loose or poorly tensioned drive or timing belts can cause premature failures; check tension with a digital acoustic tension tester
- This measures the frequency at which belts vibrate
- Designed even for difficult-to-reach places, ideal for quickly and easily checking the tension of V-belts, ribbed belts and timing belts
- Tension recommendations can be taken from Optibelt specifications and CAP calculations



178-0775

Fluke 805 Vibration Meter

- Perfect for predictive maintenance activities on moving machinery. Measures overall machine vibrations, bearing vibrations and temperature simultaneously
- Overall vibration levels are compared to preprogrammed alarm levels, and machine condition is provided in four stages
- Bearing condition is assessed automatically, without needing to know the shaft diameter and rotational speed of the bearing, nor the bearing class
- All measured values can be stored and exported to an MS Excel template to create trend plots that help to predict the machine- and bearing condition



811-1397

Castle GA2002 Pocket Vibration Meter

- Perfect for general machine and bearing vibration monitoring for predictive maintenance
- Offers reliable, repeatable and simple vibration measurements
- Measures acceleration, velocity and displacement in one instrument
- Supplied with accelerometer, cable, spike probe and case



303-3722

Qualistar Power & Energy Quality Analysers

- Poor power quality can cause disruption to manufacturing machinery. Monitor and identify the sources of issues using a capable analyser
- The CA 833x series measures all the necessary voltage, current and power parameters for full diagnosis of an electrical installation
- Captures and records all the parameters, transients, alarms and wave forms simultaneously
- Easy to handle and precise, these instruments also offer a large number of calculated values and several processing functions
- Comprehensive feature set depending on model, visit the RS website for more details



799-9070 CA 8331

799-9061 CA 8333

799-9067 CA 8336

FLIR SV87 Vibration Meter

- Make informed decisions about machine operation and maintenance, reducing unplanned downtime, lowering operational costs, and improving profitability
- A wireless connected sensing-solution designed for continuous vibration and temperature monitoring
- Ideal for manufacturing environments that use rotating machinery, industrial pumps, fans, gearboxes, and motors
- Vibration trending and analysis can help detect serious problems with industrial machines long before the damage can be seen
- The remote monitoring gateway (supplied with kit) stores sensor data and wirelessly transmits readings in real time to a mobile device or PC for analysis

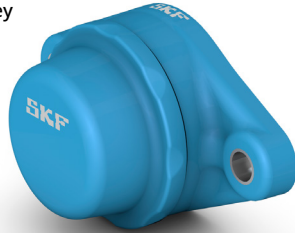


211-0028 SV87 kit (4 sensors and gateway)

211-0027 SV87 additional sensor

SKF Food Line Ball Bearing Units

- Lubricated for life and designed to withstand frequent washdowns, the new bearing units also solve many of the problems connected with traditional maintenance
- Specially developed to help eliminate contaminants and to reduce the spread of bacteria, they provide a solution to many food safety issues
- 2 hole units shown, 4 hole versions also available



209-3769	ID 25.0mm
209-5354	ID 25.4mm
209-3771	ID 30.0mm
209-5355	ID 31.75mm
209-5356	ID 38.1mm

Belt Spray

- Protects the belt from deterioration through oxidation or heat, helping to extend its life whilst improving the grip and reducing annoying squeaks
- Suitable for all belt types including vee, flat and toothed; can also be used on rubber, leather or fabric surfaces
- National Sanitation Foundation (NSF) certified as safe for use where it might come into incidental contact with food
- 400ml



137-2033

Silicone Lubricant

- General-purpose, medium-duty spray with excellent anti-stick and anti-slip properties
- Ideal for use where a clean, colourless lubricant is required; safe to use on wood, glass, fabrics, metals, most plastics, rubbers, and hard surfaces
- Eliminates friction and fabric drag
- Can be used as a mould release agent
- NSF H1 Registered
- 400ml



123-4520

Damp-Proof LED Luminaires

- Robust and well protected (IK08 and IP65)
- Increased energy savings and long operating life for significantly reduced maintenance requirements
- Easy installation with tool-free wiring
- Suspension and anti-theft kits included
- 5-year guarantee
- Emergency versions also available (with 3 years warranty)



223-5003	1200 18W 840 IP65
223-5004	1200 18W 865 IP65
223-5005	1200 32W 840 IP65
223-5006	1500 26W 840 IP65
223-5007	1500 26W 865 IP65
223-5008	1500 46W 840 IP65
223-5009	1500 46W 865 IP65

FOODLUBE® Hi-Load EP Grease

- Specifically designed for use on highly loaded bearings fed by small bore pipe work in automatic lubrication systems
- Good load carrying capability with excellent stability which extends relubrication intervals and reduces lubricant usage
- Manufactured from only FDA listed ingredients
- NSF H1 Registered
- HALAL and Kosher Certified
- Vegan Trademark registered
- MOSH/MOAH Free



185-6795	4kg
185-6796	18kg

Foodlube Hi-Power Oils

- High performance, combined hydraulic, compressor and airline lubricants designed for most types of air compressors, hydraulic systems and airline lubricator bottles
- Highly thermally stable and designed to give superior service life
- The non-toxic properties of the range make it ideal for use in food, pharmaceutical and other clean environments where NSF H1 lubricants are required



698-8164	Foodlube® Hi-Power 32
196-3750	Foodlube® Hi-Power 46
733-5038	VAC Pump Oil