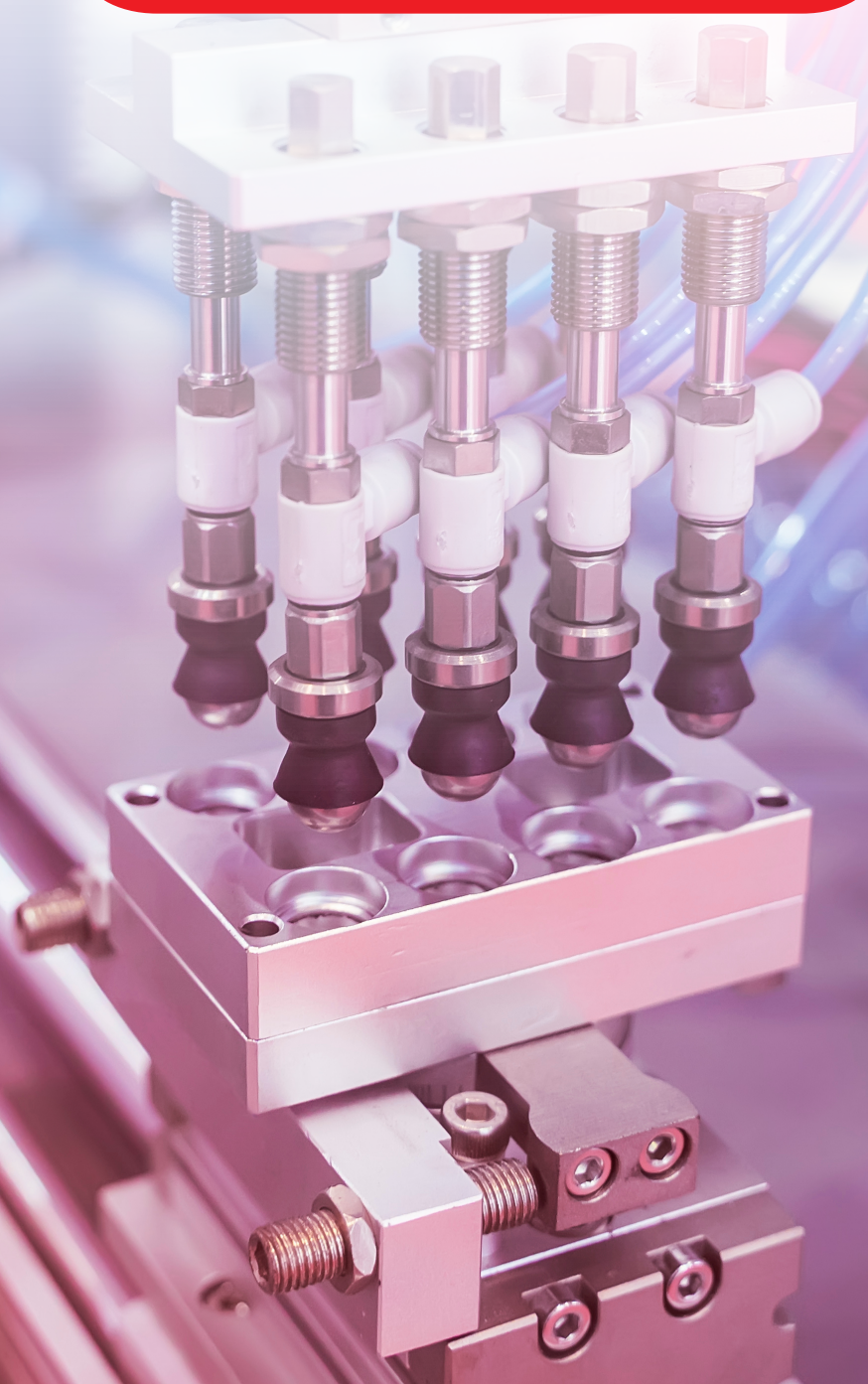


# MECHANICAL SOLUTIONS

FROM RS

Delivering mechanical solutions from trusted suppliers,  
when you need them

[www.rsonline.co.za](http://www.rsonline.co.za) | [www.rsonline.africa](http://www.rsonline.africa)



**RS**

## Rotary Knob Pneumatic Manual Control Valves

- Highly durable POM (polyoxymethylene) body material
- Maximum operating pressure of 10 bar
- Two ports, two positions
- Other sizes available (including versions for changes in hose diameter) on the RS web site
- Supplied and priced as a pack of 10



**916-0968** 6mm - 6mm

**916-0962** 8mm - 8mm

**916-0971** 10mm - 10mm

## 3104 Series Push-In Pneumatic Connectors

- Full bore design and exceptionally low leak rate
- Available with BSPP and BSPT threads
- Suitable for vacuum or pressure applications
- Examples shown, wider range available on the RS web site
- Supplied and priced as a pack of 5



**812-055** Equal elbow 4mm

**812-061** Equal elbow 6mm

**812-077** Equal tee 4mm

**812-083** Equal tee 6mm

**812-099** Equal straight 4mm

**812-106** Equal straight 6mm

## In-line Speed Controller with Push-In Fittings - Straight

- AS series inline speed controllers are lightweight and have the benefit of index plates to help identify points when multiple controllers are installed
- Can be mounted in four different ways
- Speed accurately controlled even at low velocity
- Examples shown, wider range available on the RS web site



**748-0709** M5 body, 4mm tube OD

**748-0703** M5 body, 6mm tube OD

**748-0712** 1/8 body, 6mm tube OD

**748-0715** 1/4 body, 6mm tube OD

**748-0719** 1/4 body, 8mm tube OD

**748-0728** 3/8 body, 8mm tube OD

**748-0721** 3/8 body, 10mm tube OD

**748-0725** 1/2 body, 12mm tube OD

## Pneumatic Roundline Cylinder - Double Acting

- The piston's built-in end-of-stroke buffer increases durability and cushions its impact. This also decreases corrosion and helps prevent system interference
- It's a good choice for use with oil-free air compressors
- Maximum 10 bar, G 1/8 port connection
- Examples shown, wider range available on the RS web site



**304-3577** 20mm bore, 100mm stroke

**304-3864** 20mm bore, 125mm stroke

**304-3583** 25mm bore, 25mm stroke

**304-3870** 25mm bore, 50mm stroke

**304-3606** 25mm bore, 80mm stroke

**304-3612** 25mm bore, 100mm stroke



## BL64 Series - Filter Regulator and Lubricator

- Complete air processing units that are pre-assembled and ready to install straight from the box
- The regulator has a micro fog lubricator to ensure the best lubrication
- 40µm polypropylene filter element
- Complete with gauge and brackets
- Manual or automatic drain



**196-9629** BL64-201 G1/4

**196-9635** BL64-301 G3/8

**184-4463** BL64-401 G1/2

**196-9641** BL64-601 G3/4

## MGP Compact Guide Cylinder with End Lock

- With end lock that holds the cylinder in position, even if the air supply is disconnected
- Offers mounting points on the top, side, or bottom with pneumatic ports on the top or side
- Double-acting cylinders are non-rotatable, offer a high resistance to side loads, and are able to withstand high lateral loading forces
- Examples shown, wider range available on the RS web site



**757-8660** 20mm bore, 30mm stroke

**757-8664** 20mm bore, 40mm stroke

**757-8676** 20mm bore, 50mm stroke

**757-8686** 20mm bore, 100mm stroke

**758-0705** 20mm bore, 150mm stroke

**758-0708** 20mm bore, 200mm stroke



## Air Preparation Units MS Series

- Filter, regulator and lubricator functions in a single unit
- High flow rate
- Highly efficient in removing contaminants
- Good control characteristics
- Minimal pressure hysteresis



<b>136-6744</b>	G $\frac{1}{4}$ FR/L 0.5-12 bar, 40 $\mu$ m, 900l/m
<b>136-7051</b>	G $\frac{1}{4}$ " 0.5-12 bar F/R with On/Off valve, 40 $\mu$ m, 1700l/m
<b>202-3062</b>	G3/8 FR/L 0.5-12 bar, 40 $\mu$ m, 3500l/m
<b>202-3038</b>	G $\frac{1}{2}$ FR/L 0.3-7 bar, 40 $\mu$ m, 4800l/m
<b>136-6743</b>	G $\frac{1}{2}$ FR/L 0.5-12 bar, 40 $\mu$ m, 3700l/m

## Quarter Turn Actuators DFPD

- Rack and pinion operation
- Constant torque characteristic across the entire swivel range
- Available in sizes 10 to 2300
- Suitable for the automation of butterfly valves, ball valves and air dampers



<b>121-5296</b>	DFPD-10-RP-90-RD-F03 10Nm double acting
<b>121-5312</b>	DFPD-20-RP-90-RD-F04 20Nm double acting
<b>121-4309</b>	DFPD-40-RP-90-RD-F0507 40Nm double acting
<b>121-5336</b>	DFPD-40-RP-90-RS30-F0507 40Nm single acting
<b>121-5300</b>	DFPD-120-RP-90-RD-F0507 120Nm double acting

## Pneumatic Fittings QS

- QS standard series
- Wide range of variants (push-in male examples shown)
- Maximum flexibility in standard applications
- PBT and nickel-plated brass
- Operating media: compressed air, vacuum, water
- Supplied and priced as bag of 10



<b>121-6178</b>	QS-G1/8-6 G1/8, 6mm
<b>121-6096</b>	QSM-1/8-6-1 R1/8, 6mm, Hex
<b>121-4318</b>	QS- $\frac{1}{4}$ -8 R $\frac{1}{4}$ , 8mm
<b>121-6173</b>	QS-G $\frac{1}{4}$ -8 G $\frac{1}{4}$ , 8mm
<b>121-6038</b>	QSM-M5-4-1 M5, 4mm, Hex
<b>121-6037</b>	QSM-M5-4 M5, 4mm
<b>121-6041</b>	QSM-M6-6 M6, 6mm

## Process Media Valves VZWM

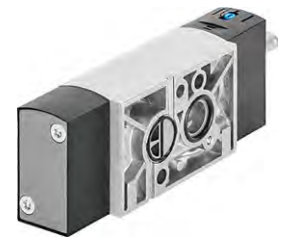
- Indirectly actuated poppet valve with diaphragm seal
- Pipe connection G1 $\frac{1}{4}$  ... G2
- Flow rate 1,400 ... 31,000 l/min
- Available in brass or stainless steel casting
- Wide range of coils
- Examples shown are 2/2 way solenoid valve, NC, female



<b>121-5807</b>	VZWM-L-M22C-G1 $\frac{1}{4}$ -F4 G $\frac{1}{4}$
<b>121-5810</b>	VZWM-L-M22C-G38-F4 G3/8
<b>121-5806</b>	VZWM-L-M22C-G12-F4 G $\frac{1}{2}$
<b>121-5809</b>	VZWM-L-M22C-G34-F4 G $\frac{3}{4}$
<b>121-5808</b>	VZWM-L-M22C-G1-F4 G1
<b>163-7305</b>	VZWM-L-M22C-G1-F5-R1 G1, stainless steel

## NAMUR Solenoid Valve VSNC

- Pilot valves for single and double-acting quarter turn and linear actuators
- Port pattern in accordance with VDI/VDE 3845
- Conversion from 3/2-way to 5/2-way valve by turning seal
- Enables single or double-acting actuators to be controlled with one valve
- Examples shown spring 5/2 way, G $\frac{1}{4}$



<b>121-5870</b>	VSNC-FC-M52-MD-G1 $\frac{1}{4}$ -F8
<b>121-5871</b>	VSNC-FC-M52-MD-G1 $\frac{1}{4}$ -F8-1B2 with switching status display
<b>125-9983</b>	VSNC-FC-M52-MD-G1 $\frac{1}{4}$ -FN-1A1-EX4-A ATEX certified

## Pneumatic Tube PUN-H

- Flexible polyurethane
- High resistance to microbes and hydrolysis
- Food-safe
- Suitable for use with energy chains
- Operating medium: compressed air, vacuum, water
- Also available as DUO twinned plastic tubing
- Examples shown, all 50m length



<b>121-6292</b>	PUN-H-6X1-BL blue, 6mm OD
<b>126-2776</b>	PUN-H-6X1-NT natural 6mm OD
<b>121-6294</b>	PUN-H-6X1-SW black, 6mm OD
<b>122-8469</b>	PUN-H-8X1,25-BL blue, 8mm OD
<b>122-8458</b>	PUN-H-10X1,5-BL blue, 10mm OD
<b>122-8461</b>	PUN-H-12X2-BL blue, 12mm OD

## Tapered Roller Bearings

- High radial and axial load carrying capacity
- Ensures a precise and rigid shaft guidance system
- Large usable speed range



### FAG

<b>137-1488</b>	20mm I.D; 47mm O.D; 15.25mm W - 30204-A
<b>137-1497</b>	25mm I.D; 52mm O.D; 16.25mm W - 30205-A
<b>137-1501</b>	30mm I.D; 55mm O.D; 17mm W - 32006-X
<b>137-1499</b>	30mm I.D; 62mm O.D; 17.25mm W - 30206-A
<b>137-1485</b>	35mm I.D; 72mm O.D; 18.25mm W - 30207-A
<b>137-1500</b>	40mm I.D; 80mm O.D; 19.75mm W - 30208-A
<b>137-1502</b>	50mm I.D; 80mm O.D; 20mm W - 32010-X

## Linear Ball Bearing Units

- Light-weight, aluminium housing which is extremely compact
- Optimised to provide high strength and stiffness
- With integral double lip seals (2LS models)



### SKF

<b>284-9352</b>	LUHR 12 680N dynamic load rating
<b>284-9425</b>	LUHR 12-2LS 680N dynamic load rating
<b>284-9368</b>	LUHR 16 900N dynamic load rating
<b>284-9431</b>	LUHR 16-2LS 900N dynamic load rating
<b>284-9374</b>	LUHR 20 1120N dynamic load rating
<b>284-9447</b>	LUHR 20-2LS 1120N dynamic load rating
<b>284-9396</b>	LUHR 30 3150N dynamic load rating
<b>284-9469</b>	LUHR 30-2LS 3150N dynamic load rating

## Double Row Angular Contact Bearings

- Double row angular contact bearings, ideal for applications that require high running accuracy as well as radial and axial loads
- Sealed examples highlighted, but complete range available with shielded options and extensive range of sizes



### RS PRO

<b>205-8772</b>	10mm ID, 30mm OD
<b>205-8778</b>	15mm ID, 35mm OD
<b>205-8781</b>	17mm ID, 40mm OD
<b>205-8785</b>	20mm ID, 47mm OD
<b>205-8788</b>	25mm ID, 52mm OD
<b>205-8791</b>	30mm ID, 62mm OD
<b>205-8813</b>	35mm ID, 80mm OD
<b>205-8815</b>	40mm ID, 90mm OD

## Bearing Heaters

- The fast, flexible and reliable way to heat bearings and ensure proper installation
- Portable, powerful (725W) and options for bearing IDs from 10mm to 205mm
- Automatic model monitors temperature via thermostat which is placed on the bearing inner race (preset to 121° C)



### ConeMount

<b>183-2642</b>	BH-02B/UK - 10-145mm
<b>183-2646</b>	BH-02C/UK - 20-145mm
<b>183-2649</b>	BH-02S/UK - 20-205mm Automatic control

## Pillow Block Bearings

- Two bolt cast-iron pillow blocks for normal duty rotating shaft applications
- Examples from range which covers 12mm to 60mm ID



### RS PRO

<b>750-8933</b>	12mm ID, PCD 95mm
<b>750-8936</b>	15mm ID, PCD 95mm
<b>750-8949</b>	17mm ID, PCD 95mm
<b>750-8946</b>	20mm ID, PCD 95mm
<b>750-8952</b>	25mm ID, PCD 105mm
<b>750-9043</b>	35mm OD, PCD 144mm
<b>750-9046</b>	40mm OD, PCD 156mm

## Deep Groove Miniature Ball Bearings

- Examples from our range of NSK Deep Groove shielded (2Z or ZZ) bearings from NSK are fitted with two metal dust shields
- Over 240 options available from stock with IDs from 3mm to 50mm in open, shielded and sealed formats

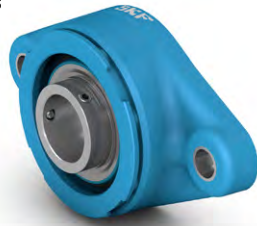


### MOTION & CONTROL NSK

<b>408-9883</b>	8mm I.D, 22mm O.D - 608ZZ1MC3E
<b>764-3626</b>	10mm I.D, 26mm O.D - 6000ZZC3
<b>409-0372</b>	12mm I.D, 32mm O.D - 6201ZZ
<b>492-2112</b>	15mm I.D, 24mm O.D - 6802ZZ
<b>409-0114</b>	17mm I.D, 35mm O.D - 6003ZZ
<b>409-0467</b>	20mm I.D, 47mm O.D - 6204ZZ
<b>764-3657</b>	25mm I.D, 47mm O.D - 6005ZZC3

## Oval Flanged Ball Bearing Units - 2 Hole

- These oval flanged ball bearing units are designed especially for the food and beverage industries. They are chemical resistant, lightweight and strong. The unit consists of an insert bearing, with an extended inner ring and set screw locking, and is suitable for applications where the direction of rotation is constant or alternating. The bearing is mounted in a composite housing
- Pre-lubricated for life with a non-toxic food grade grease
- Innovative Seal design



**209-3768** F2BC 20M-TPSS 20mm ID

**209-3770** F2BC 25M-TPSS 25mm ID

## 2 Hole Flanged Y Bearing Units

- Flanged Y-bearing units with a cast housing can be relubricated through a grease fitting in the housing
- This makes them especially suitable for bearing arrangements that operate under high levels of contamination, high speeds, high temperatures or relatively heavy loads
- FYTB series have an oval flange and two holes for attachment bolts



**339-8524** FYTB 12 TF 12mm ID

**339-8546** FYTB 15 TF 15mm ID

**339-8552** FYTB 20 TF 20mm ID

**339-8568** FYTB 25 TF 25mm ID

**339-8574** FYTB 30 TF 30mm ID

**195-9608** FYTB 35 TF 35mm ID

**212-4602** FYTB 45 TF 40mm ID

## LGHP 2 Bearing Grease

- A high-performing lubricant suitable for medium-speed to high-speed applications such as electric motors and fans
- Designed to remain stable in continuous operating temperatures of +100°C or higher, to help increase the lifespan of equipment with fast-moving parts
- Has a wide operating range, so it also offers good starting performance at low temperatures
- Protects components from corrosion and damage from friction



**821-2709** LGHP 2/1 1kg

## 4 Hole Bearing Units

- These square flanged ball bearing units are designed especially for the food and beverage industries
- They are chemical resistant, lightweight and strong. The unit consists of an insert bearing, with a narrow inner ring and set screw locking, and is suitable for applications where the direction of rotation is constant or alternating
- The bearing is mounted in a composite housing, which can be bolted to a machine wall or frame
- DFH Products in the range also come complete with a back seal and locking end cover
- Pre-lubricated for life with a non-toxic food grade grease
- Innovative Seal Design



**212-4514** F4BC 20M-CPSS-DFH 20mm ID

**212-4515** F4BC 25M-CPSS-DFH 25mm ID

**212-4517** F4BC 30M-CPSS-DFH 30mm ID

**212-4522** F4BC 40M-CPSS-DFH 40mm ID

**212-4525** F4BC 50M-CPSS-DFH 50mm ID

## Deep Groove Metric Ball Bearings - Sealed

- The seals are made from an oil and wear-resistant synthetic rubber with a steel reinforcement
- Operating temperature from -40°C to +120°C
- Accepts radial and axial loads
- Both standard and C3 clearance available (examples shown)



**442-0060** 6200-2RSH 10mm ID 30mm OD

**442-0183** 6201-2RSH 12mm ID 32mm OD

**442-0082** 6202-2RSH 15mm ID 35mm OD

**442-0076** 6203-2RSH 17mm ID 40mm OD

**442-0098** 6204-2RSH 20mm ID 47mm OD

**442-0105** 6205-2RSH 25mm ID 52mm OD

## Bearing Fitting Tool Kit - TMFT 36

- 40-piece mechanics tool kit designed for quick and precise mounting of bearings while minimising the risk of bearing damage
- It is a combination of impact rings and sleeves that allow effective transmission of mounting force to the bearing ring with the interference fit
- The risk of damaging the bearing's raceways and rolling elements is minimised
- In addition to mounting bearings, the TMFT series are also suitable for mounting other components such as bushings, seals and pulleys



**732-4738**

## SK Series Wedge Belt

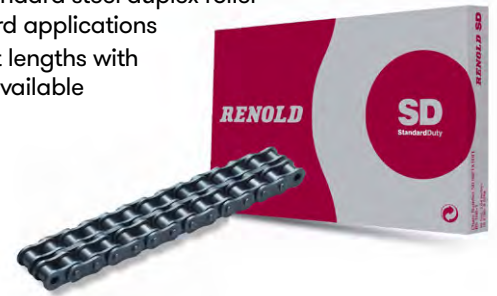
- High-performance wrapped wedge belts, manufactured in Europe
- Precision tolerances for exceptional consistency & reliability
- Can be combined in sets without matching



<b>136-7220</b>	L. 862mm; W. 9.7mm; H. 8mm; SPZ
<b>136-7229</b>	L. 1142mm; W. 9.7mm; H. 8mm; SPZ
<b>136-7256</b>	L. 1312mm; W. 12.7mm; H. 10mm; SPA
<b>136-7280</b>	L. 1340mm; W. 16.3mm; H. 13mm; SPB
<b>136-7257</b>	L. 1337mm; W. 12.7mm; H. 10mm; SPA
<b>136-7294</b>	L. 2300mm; W. 16.3mm; H. 13mm; SPB
<b>136-7305</b>	L. 3490mm; W. 16.3mm; H. 13mm; SPB
<b>136-7268</b>	L. 1812mm; W. 12.7mm; H. 10mm; SPA

## Standard Duty - Red Box - Duplex Chain

- European (BS) standard steel duplex roller chains for standard applications
- Sold in convenient lengths with connecting links available



<b>146-3750</b>	06B-2 5m length, 9.525mm pitch
<b>146-3756</b>	08B-2 5m length, 12.7mm pitch
<b>146-3762</b>	10B-2 5m length, 15.875mm pitch
<b>146-3768</b>	12B-2 5m length, 19.05mm pitch
<b>146-3774</b>	16B-2 5m length, 25.4mm pitch

## GT4 Winner Roller Chain

- GT4 Winner is a pre-lubricated, carbon steel roller chain designed for the most demanding of drive applications
- Produced using advanced heat treatment for enhanced quality



<b>183-0858</b>	RS08B-1 - BS ½ in. simplex, 5m
<b>183-0859</b>	RS10B-1 - BS 5/8 in. simplex, 5m
<b>183-0860</b>	RS12B-1 - BS ¾ in. simplex, 5m
<b>183-0861</b>	RS16B-1 - BS 1 in. simplex, 5m
<b>183-0864</b>	RS08B-2 - BS ½ in. duplex, 5m
<b>183-0865</b>	RS10B-2 - BS 5/8 in. duplex, 5m
<b>183-0866</b>	RS12B-2 - BS ¾ in. duplex, 5m
<b>183-0867</b>	RS16B-2 - BS 1 in. duplex, 5m

## Synchrobel HTD timing belts

- Designed for high torque applications from -20°C to +100°C
- Moderately oil resistant, non-ageing and ozone-resistant



<b>475-0333</b>	400mm length; 15mm width; 5mm pitch; 80 teeth
<b>475-0377</b>	500mm length; 15mm width; 5mm pitch; 100 teeth
<b>475-0608</b>	720mm length; 20mm width; 8mm pitch; 90 teeth
<b>475-0816</b>	880mm length; 30mm width; 8mm pitch; 110 teeth
<b>475-0670</b>	1.2m length; 20mm width; 8mm pitch; 150 teeth
<b>475-0866</b>	1.44m length; 30mm width; 8mm pitch; 180 teeth
<b>475-0692</b>	1.6m length; 20mm width; 8mm pitch; 200 teeth
<b>475-0743</b>	2.4m length; 20mm width; 8mm pitch; 300 teeth

## Double Loop Flex-P Couplings

- Maintenance free couplings using a flexible Hytrel element and stainless steel hub with M3 grub screw
- Exceptional flexibility in all three directions and suitable for most lower load tasks (18Nm max.) up to 3000rpm



<b>809-0723</b>	Size 10, 2mm bore
<b>809-0720</b>	Size 10, 3mm bore
<b>809-0727</b>	Size 10, 6mm bore
<b>809-0736</b>	Size 10, 8mm bore
<b>809-0742</b>	Size 20, 4mm bore
<b>809-0749</b>	Size 20, 8mm bore
<b>809-0758</b>	Size 20, 10mm bore
<b>809-0751</b>	Size 20, 12mm bore

## Jaw Coupling Set

- Flexible couplings using Nitrile rubber spider designed to absorb lower levels of vibration and cushioning against moderate shock loads
- Maintenance free, failsafe design and suitable for higher rpm applications (up to 31,000 rpm)
- Suitable for a wide variety of applications including conveyors, fans, gearboxes, pumps and general automation



<b>837-1050</b>	L050 - 27.5mm OD
<b>837-1054</b>	L070 - 35mm OD
<b>837-1063</b>	L075 - 44.5mm OD
<b>837-1066</b>	L090 - 54mm OD
<b>837-1108</b>	L095 - 54mm OD



# Supporting you every day, we're by your side



We carry more than 750,000 industrial and electronics products from over 2,500 leading suppliers. From the niche specialists to the big global suppliers, we stock almost every brand that you're likely to use. This includes our own-brand RS PRO, which offers more than 70,000 products.

With fast, easy access to the widest range of product solutions, reliable delivery, expert technical advice and procurement solutions to streamline your purchasing process, we'll help you keep things running smoothly.



## Easy Ordering

Get free delivery on orders over R1000, no minimum order quantity required. Order online, via email and phone or visit our local trade counter.



## Customer Support

Our team is on hand to support with all your queries – contact us via phone, email or speak to us on LiveChat.



## Shop online 24/7

Access our website at any time on any device and shop at your own convenience. Plus you get instant access to technical datasheets that you can download.



## Flexible Delivery Options

Locally stocked items can be delivered within 24-48 hours to major city centres. Globally stocked items are delivered within 4-6 working days.

## How can we help you today?

### Customer Services & Technical Support

Mon-Fri (8am -5pm)

Tel: +27 11 691 9300

Email: [sales.za@rsgroup.com](mailto:sales.za@rsgroup.com)

## Stud Rollers KRV Series

- Stud type track rollers with heavy-section roller raceway and stud fixing thread and lubrication hole
- Can support high radial loads as well as axial loads arising from slight misalignment and skewed running
- Suitable for applications such as cam gears, bed ways and conveying equipment



<b>174-1120</b>	16mm KRV16-PP-A
<b>174-1121</b>	19mm KRV19-PP-A
<b>174-1123</b>	26mm KRV26-PP-A
<b>174-1124</b>	30mm KRV30-PP-A
<b>174-1125</b>	35mm KRV35-PP-A
<b>174-1126</b>	40mm KRV40-PP-A
<b>194-7214</b>	52mm KRV52-PP-A

## Stainless Steel Conveyor Roller

- Used in a variety of dynamic material handling sectors
- Available in a variety of finishes, diameters, and designs
- Polyamide end caps and stainless steel bearings



<b>254-8728</b>	300mm
<b>254-8734</b>	350mm
<b>254-8740</b>	400mm
<b>254-8762</b>	450mm
<b>254-8778</b>	500mm
<b>254-8784</b>	550mm
<b>254-8790</b>	600mm

## Stainless Steel Ball Transfer Units

- Pre-lubricated units designed to move or transfer loads in all directions
- Flange fitting has lower friction movement, while bolt fitting has large support area
- Euro ball version has toughened steel main bearing cup



<b>687-865</b>	Flange 19mm ball 25kg
<b>687-871</b>	Flange 25mm ball 55kg
<b>687-916</b>	Bolt 19mm ball 25kg
<b>687-972</b>	Euro 15mm ball 45kg

## Triple Roller Units

- Triple 26mm rollers mounted in a single 50mm long cage ready for use with conveyor struts
- Polyamide glass fibre reinforced rollers available in ESD safe and colour coded options



<b>229-9165</b>	Black, 150N max. load
<b>229-9166</b>	Black, 125N max load, ESD safe
<b>229-9163</b>	Green, 150N max. load
<b>229-9164</b>	Grey, 150N max. load
<b>229-9162</b>	Red, 150N max. load
<b>229-9161</b>	Yellow, 150N max. load

## Single Roller Units -

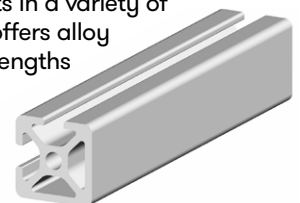
- Resilient and smooth 28mm polyamide roller unit pre-mounted in a 33mm cage ready for use with conveyor struts
- ESD safe option available, along with choice of roller colours
- Sold in pack of 10 units



<b>229-9178</b>	Black, 150N max. load
<b>229-9180</b>	Black, 125N max load, ESD safe
<b>229-9174</b>	Green, 150N max. load
<b>229-9176</b>	Grey, 150N max. load
<b>229-9171</b>	Red, 150N max. load
<b>229-9169</b>	Yellow, 150N max. load

## Aluminium Alloy Strut

- RS PRO structural systems offer a modular solution for general workplace furniture construction. Offering strong, light-weight, easily interchangeable components in a variety of profile types. The modular system offers alloy struts available in 1m, 2m and 3m lengths with profiles from 20mm to 80mm.



<b>761-3319</b>	40 x 40 mm, 8mm Groove
<b>187-3274</b>	20 x 20 mm, 5mm Groove

## DC Injection Brake Modules

- AC motor brake relays are suitable for both single & three phase motors
- Suitable for saws, centrifuges, conveyors and machines where a fast, controlled stop is required
- A potentiometer allows for adjustment of the braking current scaled from 10-100%



- 806-5260** 10A brake relay  
**806-5279** 25A brake relay

## D740 Inverter Drives - 3 Phase

- D740SC inverter drives are suitable for a wide range of drive applications from simple fan and pump loads through to high-torque machine control applications
- 0.4kw to 7.5kW 3-phase versions available
- D720SC single phase versions also available from stock



- 767-3018** 0.4kW 1.2A  
**767-3012** 0.75kW 2.2A  
**767-3021** 1.5kW 3.6A  
**767-3024** 2.2kW 5A  
**767-3028** 3.7kW 8A  
**767-3037** 5.5kW 12A

## VLT<sup>®</sup> Micro Drives

- A compact micro inverter drive perfectly matched to Industrial, HVAC and OEM applications
- Features a VLT<sup>®</sup> Advanced Harmonic Filter ideal for where reduced harmonic distortion is critical



- 891-8811** 0.37kW 1.2A, Frame M1  
**891-8820** 0.75kW 2.2A, Frame M1  
**891-8823** 1.5kW 3.7A, Frame M2  
**891-8827** 2.2kW 5.3A, Frame M2  
**891-8836** 3.0kW 7.2A, Frame M3  
**891-8839** 4.0kW 9.0A, Frame M3  
**891-8912** LCP remote mounting kit, with 3m cable

## Geared AC Motors - 3 Phase

- A range of 2 & 4 pole AC motors with matched aluminium cased gear heads with a choice of ratios and final no load output speeds
- Motors for 230/400Vac 3 phase star/delta wiring or use with inverter drives
- Sealed for life gear boxes



- 773-6891** 91W 7:1 - 280rpm  
**478-4825** 80W 7:1 - 400rpm  
**478-4831** 180W 10:1 - 280rpm  
**478-4847** 180W 50:1 - 56rpm  
**478-4853** 180W 100:1 - 28rpm  
**478-4803** 270W 20:1 - 140rpm  
**773-6894** 270W 30:1 - 93rpm

## 90mm Single & 3 Phase AC Motors

- Single and 3 phase AC motors in 6-90W ratings, ideal for smaller drive, winding and conveying tasks.
- Full range of gearheads available, just visit [uk.rs-online.com](http://uk.rs-online.com) and search 'Panasonic MZ9'



### Panasonic

- 424-005** 60W 3-ph 415Vac motor  
**424-009** 40W 3-ph 230Vac motor  
**424-015** 60W 3-ph 230Vac motor  
**424-061** 40W 3-ph 415Vac motor  
**424-083** 90W 3-ph 230Vac motor  
**424-087** 90W 3-ph 415Vac motor  
**424-150** 40W 1-ph 230Vac motor  
**424-156** 60W 1-ph 230Vac motor  
**424-172** 90W 1-ph 230Vac motor

## ALTIVAR ATV320 Machine Drives

- The Altivar 'Machine' ATV320 drive is designed to meet the demands from OE Manufacturers using 3 Phase synchronous and asynchronous motors from 0.18 to 15kW
- Replaces the ATV32 & ATV312 drives, while adding embedded Modbus & CANopen and optional Ethernet comms



- 125-3237** 0.37 kW, 400Vac, 2.1A  
**125-3241** 0.55 kW, 400Vac, 2.8A  
**125-3245** 0.75 kW, 400Vac, 3.6A  
**125-3249** 1.1 kW, 400Vac, 5A  
**125-3253** 1.5 kW, 400Vac, 6.4A  
**125-3257** 2.2 kW, 400Vac, 8.7A  
**125-3259** 3 kW, 400Vac, 11.1A

## Chainspray

- Chain and drive lubricant offers maximum adhesion to chain link with excellent penetration, lubrication and corrosion protection of the pins
- High temperature resistant: up to 200°C continuous (300°C intermittent)
- FLT version for fork lift trucks



**780-5231** Chainspray 400ml

**745-7523** FLT Chainspray 500ml

## Belt Spray

- Protects the belt from deterioration through oxidation or heat, helping to extend its life whilst improving the grip and reducing annoying squeaks
- Suitable for all belt types including vee, flat and toothed; can also be used on rubber, leather or fabric surfaces
- National Sanitation Foundation (NSF) certified as safe for use where it might come into incidental contact with food
- 400 ml



**137-2033**

## Lubricant Aerosol Perma-Lock Belt Grip, Food Safe

- Attached secure spray straw gives more control on application and gives access to hard to reach parts
- Locked on actuator cannot detach Reduces squeaking noise from slipping belts
- Creates a water resistant film



**123-4856** 500 ml

## WD-40 Specialist

- Professional-grade range of lubricants and greases
- Smart Straw applicator, offers two ways to spray: flip up straw for hard to reach areas or flip it down for wide angle spray coverage
- 360° valve enables spraying at any angle, even upside down
- 400ml cans



**757-7131** White Lithium grease

**822-7925** Long lasting grease

**757-7147** PTFE lubricant

**757-7134** Anti-friction dry PTFE lubricant

**757-7122** Silicone lubricant

**757-7125** Fast release penetrant

## SAPPHIRE® Bearing Grease

- Designed to provide effective lubrication and protection for bearings operating under a wide variety of conditions
- Increases bearing life and prevents premature failure which reduces maintenance costs and avoids costly unplanned downtime
- Cartridges shown, for other options visit our website



**330-6301** Sapphire® 1 multi purpose 400g

**238-6362** Sapphire® 2 heavy duty 400g

**238-6413** Sapphire® Hi-Load 2 long life multi purpose with MoS2 400g

**733-4997** Sapphire® Advance 2 multi purpose EP with PTFE 380g

**238-6407** Sapphire® Aqua 2 multi purpose water resistant EP 380g

**330-6288** Sapphire® Hi-Pressure high load with MoS2 400g

**330-6171** Sapphire® Extreme high load/temp with MoS2 400g

## Grease Spherol L-EP-2 Cartridge

- General purpose extreme pressure grease to protect bearings components subject to heavy shock and loading
- Excellent stability
- Good adhesion and water wash tolerance
- Incorporates a powerful rust inhibitor



**198-3186** 400 g

## 2400 Blue Threadlocking Adhesive

- Designed for locking and sealing of threaded fasteners, which require normal disassembly with standard hand tools. This product cures when confined in the absence of air between close-fitting metal surfaces and prevents loosening and leakage from shock and vibration. It is particularly suitable for applications on less active substrates such as stainless steel and plated surfaces, where disassembly with hand tools is required for servicing.



### LOCTITE

**708-1924** 50 ml, 24 h Cure Time

**408-4080** Loctite 243 - medium strength

**508-6649** Loctite 2701 - high strength

## ZG90 Rapid Dry Galvanise

- Hot-dip galvanise paint for galvanised steel and providing effective protection against corrosion
- Excellent adhesion and flexibility for long-term performance
- 500ml



### Ambersil

**187-6166**

## Circlip Kits

- Stainless steel clips conform to DIN 1.4122 and BS3673
- Supplied in compartmented storage box, complete with a layout sheet giving dimensional information
- Kit 1: shaft diameters : 2.25 – 12mm, 4 – 16mm, 8 – 12mm
- Kit 2: shaft diameters: 13 – 20mm, 14 – 25mm



**278-360** Kit 1 890-piece

**278-376** Kit 2 450-piece

## Tough Wipes

- Super high absorbency hand wipes with a polymer web that gives the cleaning of pumice without the scratching
- Highly effective on range of soiling including grease, oils, petrochemicals, paints, adhesives, tar, bitumen, resins
- Sold in tub of 100



### Ambersil

**482-1508**

## 1200-Piece Steel Self Tapping Screw Kit

- BZP steel slotted & cross recess pan head screw kit
- Kit contains 1200 self-tapping screws, in sizes No. 4, 6, 8 & 10, supplied in a moulded plastic storage case



**546-3478**

## BZP Steel Hex Bolt and Nut Kit

- 476-piece set supplied in a plastic case for safe storage and portability
- Kit contains bolts and nuts in M6, M8, M10 and M12 sizes
- Bolt thread lengths between 30 and 80mm



**725-9978**

## Drill and Tap Set

- High performance taps and drills designed for use with most materials
- Featuring A002 drills with Titanium Nitride tip coating that minimises wear, increases tool life and allows increased performance and self-centring point for excellent positional accuracy
- Hand machine taps compliment the set in sizes M3, M4, M5, M6, M8, M10, M12



**DORMER**

**787-8986**

# Take your Pressure Calibration to the next level

The Process Calibration range from Druck has been leading in reliable, accurate and easy to use calibration tools and instruments at every level for 50 years.

The **Essential** range provides rugged, accurate and easy-to-use test and calibration tools, **Expert** introduces higher accuracy and more functionality and the **Elite** range provides a modular system offering state-of-the-art multifunction communicator and calibrator. For a Unified approach, link with our **4Sight2** software to provide seamless calibration management.



**The Elite range**



**The Expert range**



**The Essential range**

## Laser Belt Alignment Tools

- These belt alignment tools offer fast and accurate laser alignment of pulleys and sprockets
- Using powerful magnets to hold firmly to the pulley's side face, the transmitter projects a line to the receiver (mounted on the opposite pulley); various indicator lines on the receiver give an immediate visual indication of any offset or misalignment with the belt
- Can be used on almost all machines using V belts, ribbed belts as well chain sprockets



**821-5077** TKBA 10 red laser up to 3m

**821-5086** TKBA 20 green laser up to 6m, or in sunlight

## Testo 470 Optical & Mechanical Tachometer

- Can be operated with one hand, and offers a combination of optical and mechanical rpm measurement
- By attaching an adapter for a probe tip or a speed disc, the optical measurement becomes a mechanical one, allowing speeds and lengths to be measured
- For optical measurements, simply attach a reflective marker to the measurement object, point the visible measurement spot at the reflective marker, and measure



**327-6395**

## Inspection Camera

- View inaccessible areas thanks to the probe length of 1m
- See images clearly on 2.4" LCD screen with 480 × 234 pixels resolution
- Features a durable camera snake with an adjustable intensity LED worklight (IP67)



**SAVE  
15%**



**192-4383**

**FLUKE®**

## Fluke TiS60+ Thermal Imager

- Take your plan for a proactive maintenance programme and turn it into reality
- With infrared resolution of 320 × 240, temperature measurement range: -20°C to 400°C and 3.5" VGA touchscreen LCD display
- Designed for industrial environments: water and dust resistant to IP54 and engineered to withstand a 2m drop
- Keep track of everything you've inspected with built-in voice annotation, photonote: of what you've surveyed, and tag each thermal image against a specific asset for easy follow-up



**198-1145**

## Fluke 805 Vibration Meter

- Make go or no-go maintenance decisions with confidence. The Fluke 805 FC Vibration Meter provides repeatable, severity-scaled readings of overall vibration and bearing condition
- Overall vibration measurement (10Hz to 1,000Hz) for acceleration, velocity and displacement units of measurement for a wide variety of machines
- Crest Factor+ technology provides reliable bearing assessment using direct sensor tip measurements between 4,000Hz and 20,000Hz
- Compare vibration levels with ISO-10816 severity scales and store results to the Fluke Connect Cloud



**811-1397**

## T5 Multifunction Tester

- Three testers in one compact tool
- Automatically measures ac and dc voltage (up to 1000 V) with precise digital resolution
- Displays resistance to 1000 Ω
- Easy and accurate Open Jaw current measurement
- Continuity beeper
- Compact design with neat probe storage
- Rugged enough to withstand a 10 ft (3 m) drop
- Detachable SlimReach probe tips customised for national electrical standards



**291-9372** T5-600





## 24-Piece Precision Screwdriver Set

- Precision screwdrivers are ideal for use on small, intricate devices like watches, calculators, mobile phones and other electronic devices
- Colour coded handle for easy identification and selection of the tip from the set
- Set contains: hexagon: H1.5 x 50, H2 x 50, H2.5 x 50, H3 x 75mm; Phillips: PH0 x 50, PH00 x 50, PH1 x 75mm; Pozidriv: PZ0 x 50, PZ1 x 75mm; Torx: T6 x 50, T7 x 50, T8 x 50, T9 x 50, T10 x 50, T15 x 75, T20 x 75mm; slotted: 1.0 x 50, 1.2 x 50, 1.5 x 50, 1.8 x 50, 2.0 x 50, 3.0 x 75, 3.5 x 75, 4 x 75mm stored in a handy plastic case



**876-6278**

## 5-Piece Cutter Set

- Electronic cutters and pliers manufactured from high grade Swedish steel
- Progressive cutting edges give two pliers in one – edges near joint are shaped for cutting hard materials, edges near tip are adapted for cutting/stripping softer materials
- Ergonomically designed handles with integrally moulded thermoplastic inserts to reduce hand slippage, provide optimum comfort in use and apply the greatest possible force with the least effort



**361-3126**

## Adjustable Spanner

- ERGO™ adjustable wrench has 40% wider opening compared to a standard adjustable wrench of equivalent size
- Slim head for accessibility combined with a convenient length handle and low weight make it perfect for plumbers and other tradesmen that carry their tools with them
- Jaws are angled at 15° to provide maximum access in confined spaces



**469-7018**

## 8 Piece Electronics Tool Kit

- Kit designed for electronics engineers containing carefully selected high quality tools
- Contents: snipe nose pliers, side cutters, slotted screwdrivers, Philips screwdrivers, adjustable spanner and ESD safe straight tweezers housed in a hand-held wallet



**418-9309**

## RX Series Diagonal Side Cutters

- Precision ERGO™ cutters manufactured from high performance alloy steel with black finish
- Precision induction hardened edges 63-65 HRC
- Ideal for wire harness work and standard printed circuit board assembly



**361-2252** Micro cutter for 0.4-2mm wire

**361-2274** Flush cutter 0.3-2mm wire

**361-2280** Ultra cutter 0.3-1.6mm wire

## Stainless Steel Tweezer Set

- General purpose set containing the most commonly used tweezers, supplied in an ESD wallet
- All tweezers have polished edges hand crafted to perfect tip symmetry and balance ensuring tips always line up perfectly
- Satin finish for good reduction of glare



**361-3097**

## Kraftform Kompakt VDE Set

- Compact tool set with the 16 important screwdriving tools for electrical work
- Kit contains: VDE holder, 14 VDE blades and voltage tester all housed in a robust textile pouch
- The interchangeable blades have reduced diameter with integrated protective insulation, allowing sunken screws and spring elements to be accessed easily



775-5665

## Kraftform Torque Screwdriver

- Adjustable torque screwdriver with Rapidaptor quick-release chuck
- Suitable for bits with 1/4" hex head drive
- Distinct signal when pre-set value is reached
- Torque settings 0.3 to 1.2Nm



541-6191

## Zyklop Speed Ratchet Socket Set

- 29-piece Zyklop socket and ratchet set delivers top quality performance and contains the most popular sockets, a selection of bits and extensions plus a 3/8" ratchet
- Chrome Vanadium sockets are suitable for manual and non-impact machine use
- Multi-component ratchet handle is ideal for use in a confined spaces due to the adjustable head positions and screwdriver style handle
- Set contains: 3/8" drive ratchet, 8-19mm sockets, 76 and 200mm extension bars, screwdriver bit adaptor, PH, PZ, Torx®, slotted and Hex-Plus bits



812-6270

## Kraftform Plus VDE Screwdriver Set

- 7-piece screwdriver set with individually tested, insulated screwdrivers as per IEC 60900 housed in a handy rack
- Kraftform Plus handle for pleasant, ergonomic working with hard gripping zones for high working speeds and soft zones which ensure high torque transfer
- Partially Lasertip ensure the tip bites into the screw head and prevents any slipping
- Set contains: Philips: PH 1, PH 2; slotted: 2.5×80mm, 3.5×100mm, 4.0×100mm, 5.5×125mm and single-pole phase test screwdriver



514-5697

## 3950/9 Hex-Plus 9 Piece Key Set

- L shaped Hex-Plus set designed to ensure a larger contact surface inside the screw recess, reducing notching effect and enabling 20% more torque transfer
- Ball ended long arm for use in hard to access awkward areas
- Set contains: 1.5, 2.0, 2.5, 3.0, 4.0, 5.0, 6.0, 8.0 and 10mm in a practical clip fastener



638-8312

## 30-Piece Bit-Check® Rapidaptor Set

- Brilliant compact tool set comprises the most commonly used Phillips, Pozidriv, TORX bits alongside a ratchet supplied in a compact pocket size holder ideal for professionals on the move
- Zyklop Mini 1 ratchet is incredibly robust due to its full-steel design and can withstand torque forces up to 65 Nm; it's petite size is ideal for work in confined spaces
- Bit-Check with socket adaptor enables simple tool removal and reinsertion
- For full contents visit our website



705-4846

## Quick Grip One Handed Bar Clamps

- Evenly distributes up to 136kg of sustained clamping force, these clamps are ideal for temporary hold-down, quick clamping applications
- QUICK-CHANGE system provides easy removal of jaws for accessory installation or conversion to a spreader
- Swivel jaw with lock for clamping uneven surfaces
- Square XP-style protective pads protect the work surface



**IRWIN**

**362-0180** 150mm

**362-0196** 300mm

## G Clamp

- A range of four general purpose Irwin engineer's G-clamps which have smooth running screw threads with rotatable captive pads on the lower clamping face. These clamps are finished in stove enamelled blue.
- G clamps are a general purpose clamping tool which is ideal for DIY enthusiasts and can be used for many applications in both woodworking and metalworking.



**IRWIN**

**542-447** 50mm x 25mm

## Pipe Cutter

- A Professional Tube Cutter from Irwin that is compact, strong and lightweight. Can be used for cutting a wide range of materials, from plastic to copper. Fitted with wide rollers to hold the tube square against the cutting wheel to prevent "tramling".
- This exceptional thin, fast cutting wheel features two rollers to ensure the cutting wheel is held squarely on the tube resulting in a square cut.



**IRWIN**

**123-0229** 45 mm

## Plastic Pipe Cutter

- "V" Shaped blade for smooth and a precision cut
- Reduces any tube deformation
- One-handed ratcheting operation
- Rubberised grips provide confidence and safe handling"the cutting wheel is held squarely on the tube resulting in a square cut.



**IRWIN**

**123-0231** 26 mm

## Quick Grip Spring Clamps

- With a clamping force of 15 to 30kg, these clamps are suitable for medium duty tasks
- Specifically designed jaws that hold oddly shaped work pieces together with removable soft pads that can be easily replaced when worn
- Ergonomic handles for comfort and ease of use



**IRWIN**

**145-7906** 25mm

**145-7907** 38mm

## Hacksaw Frame

- Ergonomic metal frame for higher blade tension preventing the blade being released when dropped
- Metal tensioning mechanism for a longer lasting tool
- Soft touch handles ensure a comfortable sawing grip and prevents slippage
- Blade storage no need to search for spare blades
- 90°-55° Blade mounting for sawing large objects
- Jab-Saw for sawing in confined spaces



**IRWIN**

**123-0244** I-125

## High Tensile Bolt Cutters

- Special design for quick simple adjustment; yet still offering heavy-duty cutting performance and hard working reliability
- The lighter handle construction is ideal for difficult or uncomfortable situations
- Ergonomic rubber grips for any weather
- Max cutting capacity: 5mm (355mm version), 7.9mm (610mm version)



**IRWIN**

**145-7959** 355mm

**145-7961** 610mm